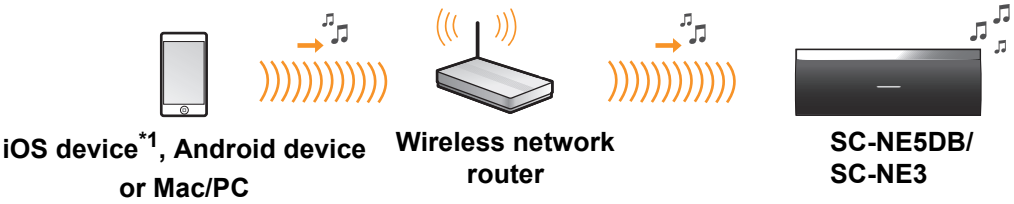


Wireless Speaker System
Model No. SC-NE5DB
SC-NE3

VQC9396

Wi-Fi® connection guide

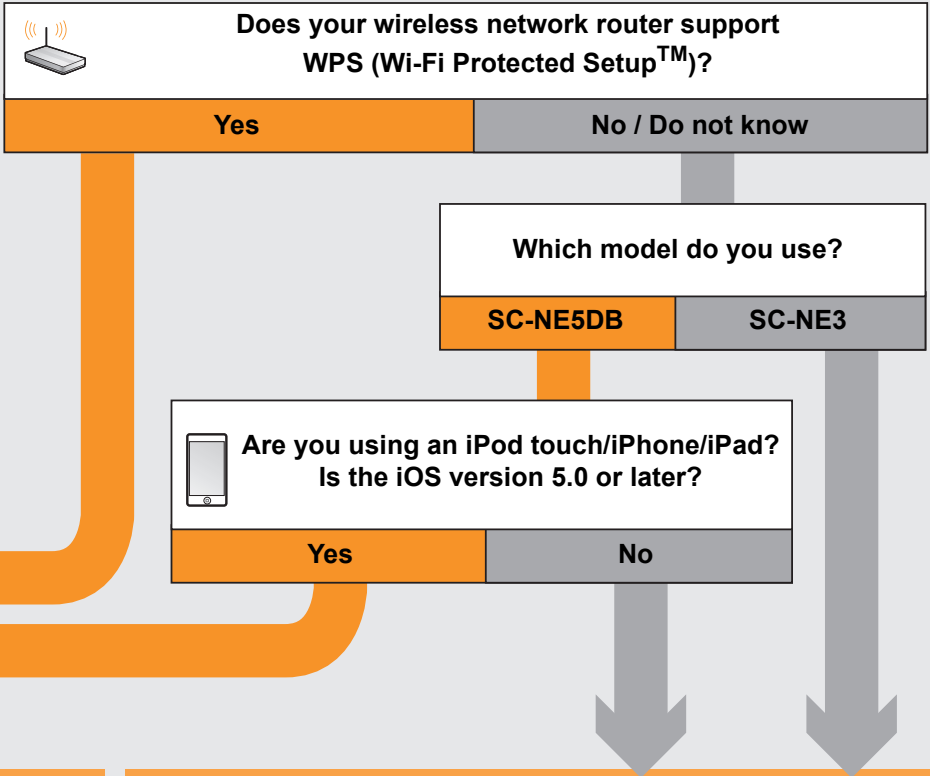
You can wirelessly stream music from an iOS device, an Android™ device or a Mac/PC to SC-NE5DB/SC-NE3's speakers. To use this music-streaming feature, SC-NE5DB/SC-NE3 must join the same 2.4 GHz wireless network as the compatible device through the wireless network router (access point).



*1: Refer to the Operating Instructions for the compatibility.
Screen images used in this sheet : iPhone 4S, iOS 6.0.1

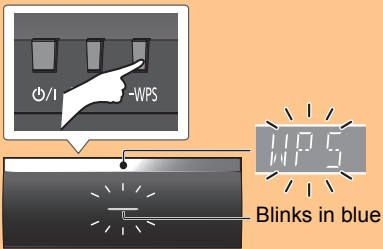
Start wireless network settings

- Preparation
- 1 Place SC-NE5DB/SC-NE3 close to the wireless network router.
 - 2 Turn this system on.
 - 3 Follow the chart below to choose the network setting method.
- If you want to perform wireless setting with your Mac/PC, or you want to apply the advanced setting, refer to **SC-NE5DB** "Method 4" or **SC-NE3** "Method 3" in the operating instructions.

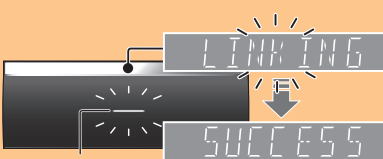
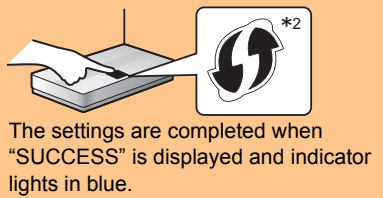


WPS button method

- 1 Press and hold [— WPS] on the speaker unit for more than 3 seconds.



- 2 Press the WPS button on the wireless network router.



Lights in blue
*2 : The marking may differ.

- 3 Press [OK] on the remote control to exit.

Using the iPod dock (SC-NE5DB only)

The following explanations are based on an iPhone.

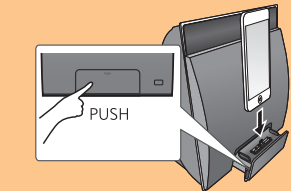
- 1 Disconnect any devices connected to the CD unit.

- 2 Connect the iPhone to your home wireless network.

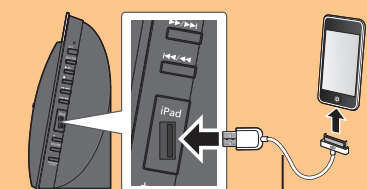


- 3 Connect the iPhone to the CD unit. Choose one of the following connections.

Lightning connector compatible iPod touch/iPhone:

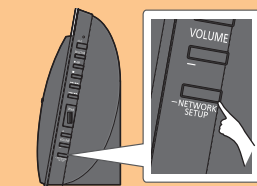


iPod touch/iPhone/iPad with iOS 5.0 or later:



Dedicated cable supplied with the iOS device

- 4 Unlock your iPhone and then press and hold [—NETWORK SETUP] on the CD unit for more than 3 seconds.



- 5 A message will pop-up on the iPhone. Allow the iPhone to share the wireless network settings.



- 6 The settings are completed when "SUCCESS" is displayed and the indicator on the speaker unit lights in blue.

- 7 Press [OK] on the remote control to exit.

Using the smartphone app



You can make the wireless network settings with the app, "Panasonic Stereo System Network Setup" (for free). If you're using an Android device, download the app at the Google Play™ Store. If you're using an iPod touch/iPhone/iPad, download it at the App Store.

Preparation

- Connect your smartphone to your home wireless network.
- Check the password for your home wireless network.

- 1 Press [SETUP] on the remote control repeatedly to select "NET SETUP" and then press [OK].

- 2 Start "Panasonic Stereo System Network Setup" on your smartphone and follow the indications.

Note for the iOS version
After step 2

- 1 Enter the password for the home wireless network to which the iOS device is connected.
- 2 When a message instructing you to connect the iOS device to this system is displayed, press the home button to close the app.
- 3 On the Wi-Fi network selection screen in "Settings", select "00 Setup _____".



- 4 When a message indicating the completion of the connection to this system is displayed, restart the app.



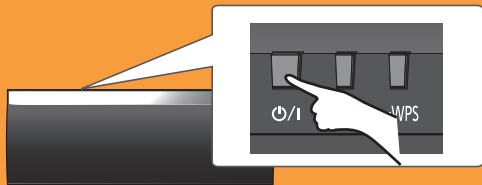
- 5 When a message indicating the completion of the Wi-Fi setup of this system is displayed, close the app, and then check the operation of AirPlay, etc.

Using AirPlay

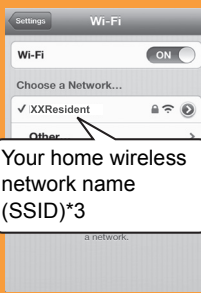
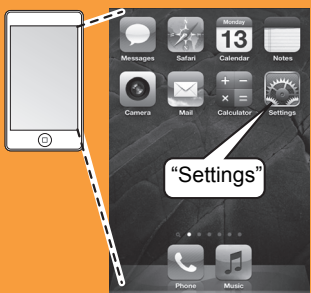
The following explanations are based on an iPhone.

Preparation

- Turn this system on.

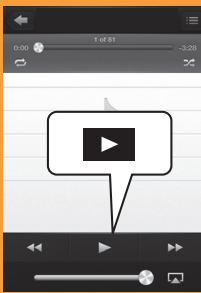
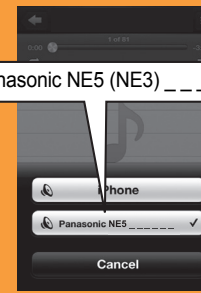
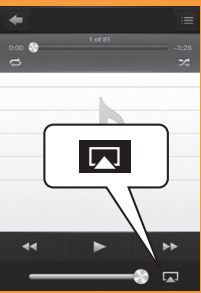
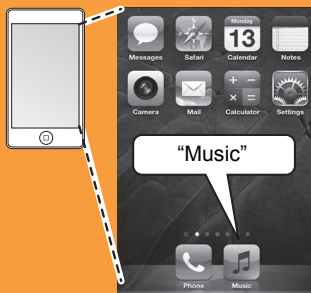


- 1 Connect the iPhone to your home wireless network.



*3 : You may be prompted for the password. Enter the password of your home wireless network.

- 2 Select "Panasonic NE5 (NE3) _____" from the AirPlay icon and start play.



Play starts.
(with a slight delay)