

# EH-SR86

## Danger

● **Never use this product near the electric medical devices or electric therapy devices suitable for home use that are listed below.**

- Pacemakers and other electronic medical implants
- Heart-lung machines and other electronic life support products
- Electrocardiographs, instillators and other mountable types of electronic medical devices (Doing so may cause these devices to malfunction.)

## Warning

● **The following individuals should not use this product.**

- Individuals with heart disease
- Individuals with neurological disorders of the face
- Individuals with blood disorders such as hemorrhagic disease and hemophilia
- Infants, growing children and individuals not able to declare their intentions
- Individuals with head prognostic symptoms as a result of traffic accidents and similar traumatic incidents (Doing so may cause accidents or other troubles.)
- Individuals with a predisposition to allergies
- Individuals with skin diseases and atopic dermatitis (Doing so may cause trouble to your skin or body.)
- Individuals with impaired sense of temperature (Doing so may cause burn injuries.)
- Individuals who are pregnant or have given birth within the last 30 days (Doing so may cause trouble to your skin due to unstable hormonal balance.)

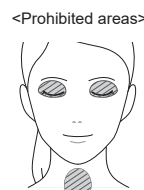
● **Do not use the RF×EMS LIFT mode near your heart.** (Doing so may cause accidents or other troubles.)

● **Do not use in the following situations or on the following parts:**

- When you feel ill
- After taking steroid hormones, immunosuppressants, or sleep-inducing drugs
- When feeling extremely tired
- On parts of the skin that have an injury, rash, swelling, or other abnormal conditions
- On parts that have abnormal skin conditions such as skin inflammation or severe sunburns
- On parts where depilation was performed the same day
- On parts where plastic, cosmetic, or other surgery has been performed
- On your throat and mucosa (Doing so may cause trouble to your skin or body.)
- On your eyelid (Doing so may cause eye trouble.)


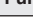


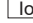
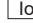
Avoid  areas.

● **Avoid keeping the product applied to the same site and keep it moving along your skin.** (Failing to do so may cause burns.)



## How to Use

### Modes

* For functions enclosed in  , the level selection switch allows you to select one of three levels.			
	Mode	Purpose	Function* Treatment time
Special care	RF×EMS LIFT	Facial muscle toning	 , RF Ion, LED Approx. 6 min
	RF PUMP	RF warm treatment	 , Ion, LED Approx. 6 min
	EYE CARE	Eye care	 , RF, LED Approx. 2 min
Daily care	CLEAN	Removal of dead skin cells and dirt from pores	 , RF, LED Approx. 3 min
	MOIST	Moisturizing to the horny layer	 , RF, LED Approx. 3 min

### Frequency of use

The frequency of use depends on the mode.  
Respect the frequency of use by using as referred in the usage example.  
**Do not use multiple special care modes on the same day.**

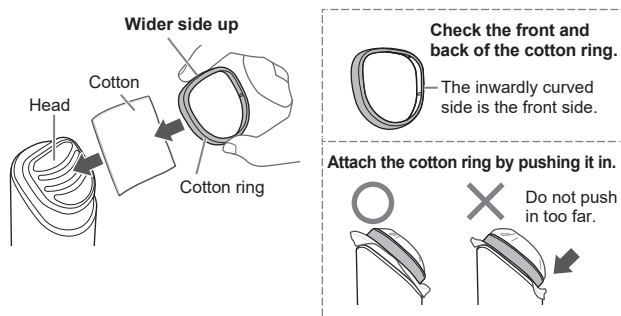
(○: Day of use)

	Mode	Frequency of use	One week usage example						
			M	Tu	W	Th	F	Sa	Su
Special care	RF×EMS LIFT	Once a day in either mode and at least one day apart.		○					○
	RF PUMP	Up to three times a week in total for both modes.					○		
	EYE CARE	Once a day and at least one day apart. Up to three times a week.	○			○		○	
Daily care	CLEAN	Once a day. Can be used every day.	○	○	○	○	○	○	○
	MOIST	• Can be used in combination with special care on the same day.	○	○	○	○	○	○	○

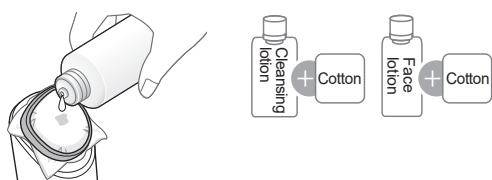
### Preparing the cotton and lotion (Only when using in the CLEAN mode)

Before using in the CLEAN mode, make the following preparations.

**1 Attach a commercially available cotton to the head.**



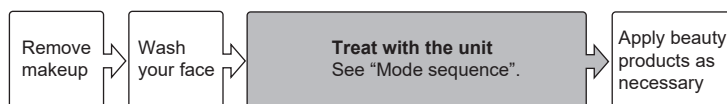
**2 Soak lotion into the cotton (enough to soak through the other side).**



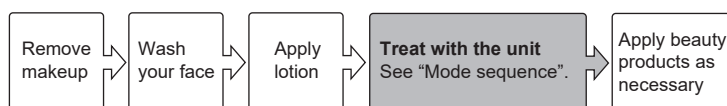
## Use the unit according to your skin conditions and problems.

### Basic sequence

#### When starting from the CLEAN mode



#### When starting from other than the CLEAN mode

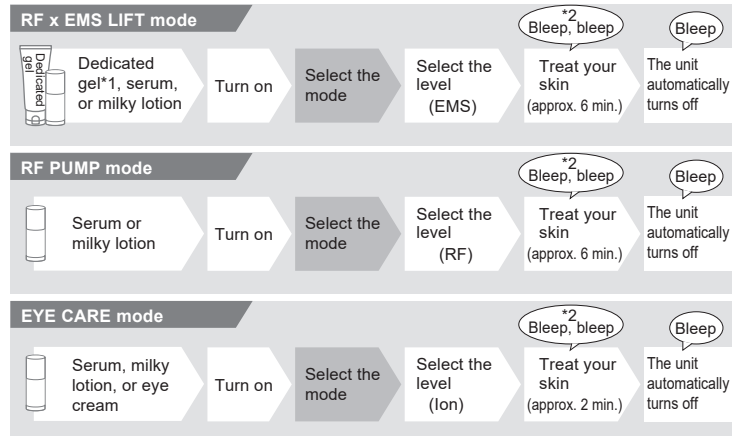


### Combining modes

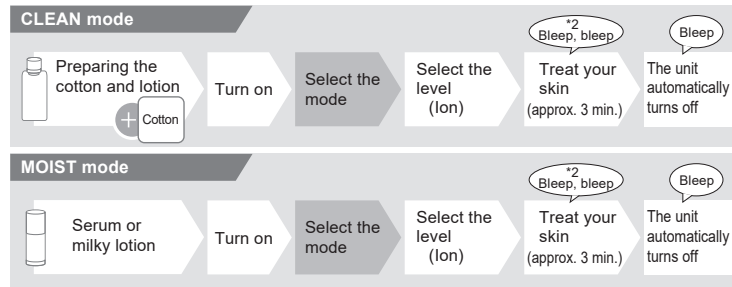
The CLEAN and MOIST modes can be combined with any special care mode and used on the same day.  
In that case, use them in the order of: CLEAN mode → MOIST mode → special care.

### Mode sequence

#### Special care



#### Daily care



\*1 Appropriate amount of dedicated gel (guide): Approx. 1 to 2 g (1.5 cm diameter)  
Dedicated gel is recommended to transmit the EMS more efficiently to your skin.

\*2 Indicates the elapse of a half of the treatment time (as a guide to switch to the other side of your face).

## How to Use (continued)

### How to apply

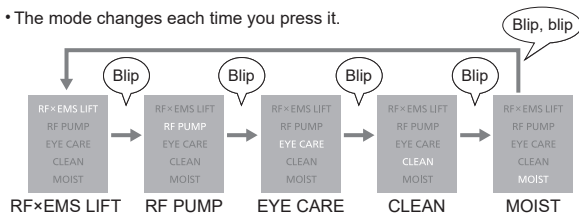
Before use, remove makeup and wash your face.  
When starting from other than the CLEAN mode, treat your skin with face lotion and then, dedicated gel, beauty lotion, or milky lotion.

#### 1 Press and hold (approx. 1 second) to turn the power on.

- [RF×EMS LIFT] lights up.

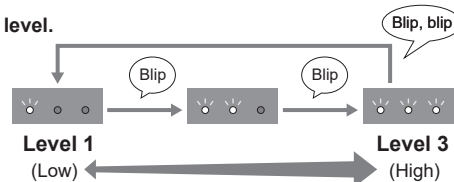
#### 2 Press to select the mode.

- The mode changes each time you press it.



#### 3 Press to select the level.

- The level changes each time you press the switch.
- Start with level "1".



#### 4 Apply the unit to your skin and move it.

- Grip the unit by fully touching the ion panel on the back side.
- Keep the head surface in contact with your skin without a gap and keep moving it during treatment. Do not keep it on the same site for a long time.
- Do not press it strongly against your skin.



#### TIP

For the cheeks and face line, use the flat part of the head to lift up your skin.

### How to move

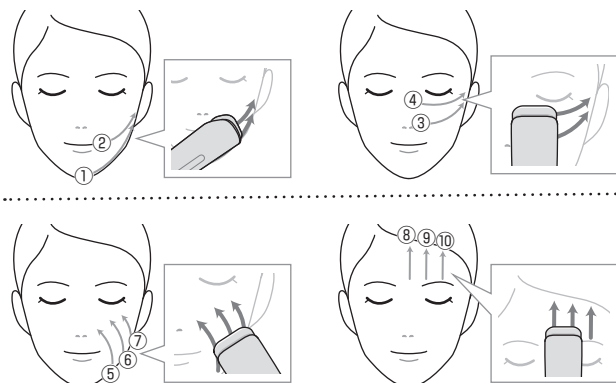
Treat one side and then the other side of your face.

- When a half of the time elapsed in the mode, two long beeps sound. Use them as a guide to switch to the other side of your face.
- Slide the unit in the direction of the arrows in the same way on the right and left.

#### RF x EMS LIFT / RF PUMP mode

Approx. 6 minutes

Automatically turned off



Approximate time per arrow: 7 seconds for ① to ⑦ and 3 seconds for ⑧ to ⑩

- Slowly move the unit to lift up your skin.
- Treat in order of ① to ⑩ without treating the same site repeatedly.

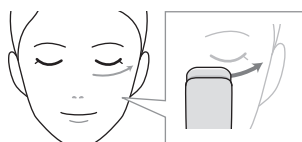
**i** • In the RF PUMP or EYE CARE mode, if the unit cannot be moved smoothly, add some amount of lotion.

- In the RF x EMS LIFT mode, if you feel that the EMS stimulation has become weak, add some amount of the dedicated gel or lotion.
- If you feel that the EMS stimulation is weak when using a lotion, using the dedicated gel is recommended.
- Fully touch the ion panel on the back side.
- Keep the electrode in close contact with the skin.
- If RF or EMS is continuously applied to the skin for 8 or more seconds, its output will temporarily stop.

#### EYE CARE mode

Approx. 2 minutes

Automatically turned off



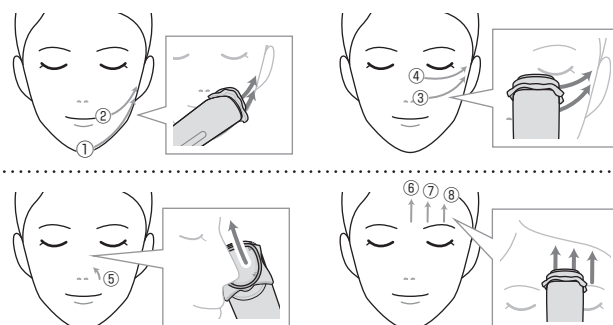
Approximate time per arrow: 5 seconds

- Do not use the unit on your eyelids.

#### CLEAN mode

Approx. 3 minutes

Automatically turned off



Approximate time per arrow:

7 seconds for ① to ③, 5 seconds for ④, and 3 seconds for ⑤ to ⑧

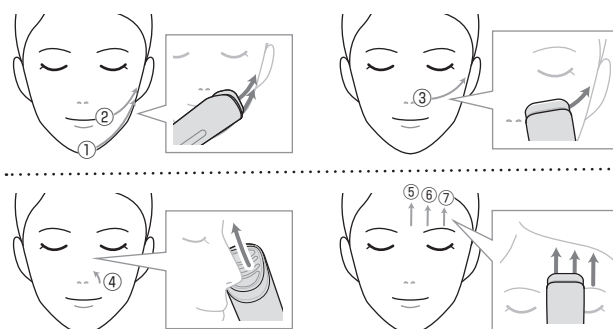
- Treat in order of ① to ⑧ without treating the same site repeatedly.

**i** • In the CLEAN mode, if the unit cannot be moved smoothly due to cotton moisture loss, add some amount of lotion.

#### MOIST mode

Approx. 3 minutes

Automatically turned off



Approximate time per arrow: 7 seconds for ① to ③ and 3 seconds for ④ to ⑦

- Treat in order of ① to ⑦ without treating the same site repeatedly.

**i** • In the MOIST mode, if the unit cannot be moved smoothly, add some amount of lotion.

### After Use

#### Condition the skin

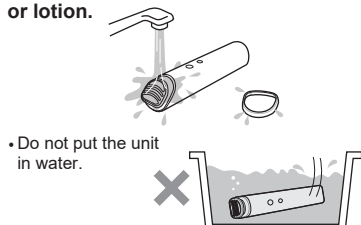
- Do your routine skin care.



#### Rinse the unit with water

- Check that the power is turned off.
- If you are concerned about stains and/or dirt, wipe with a cloth soaked in a solution of water and bar soap, then rinse thoroughly with water.

#### 1 Rinse the head and cotton ring with water to remove any remaining gel or lotion.

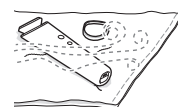


#### 2 Remove any water droplets adhered to the socket.

- Gently pat the unit on a dry cloth to remove any water droplets.
- In particular, do not charge the battery while the socket is wet.



#### 3 Wipe with a dry cloth and dry thoroughly in a well-ventilated place.



- Do not wrap the USB cable around the unit when storing.

