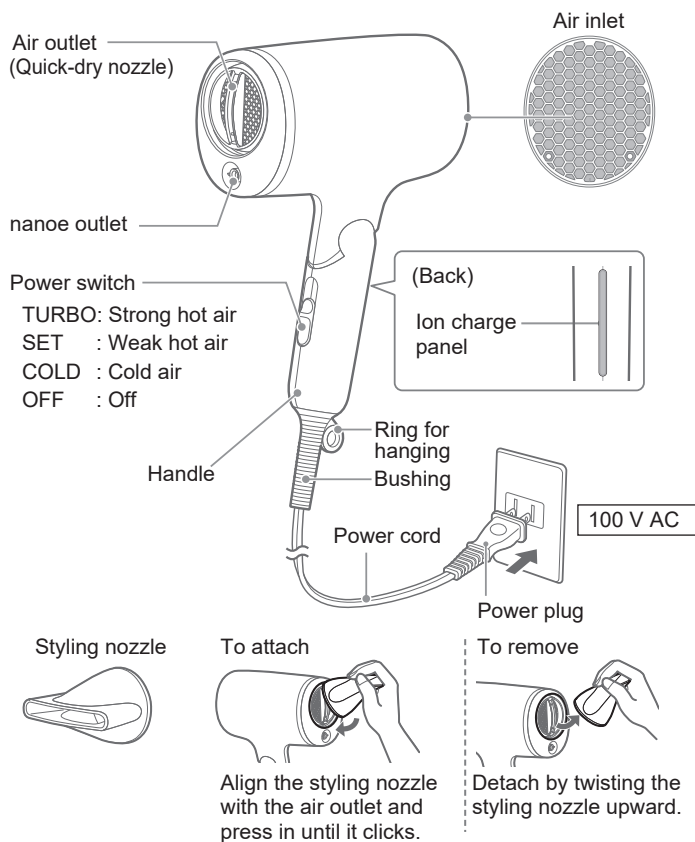


EH-NA7M

Names and Functions of Parts

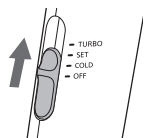


For use in Japan only.

The product is for use in Japan only (100 V AC).
Using a transformer may also result in failure.

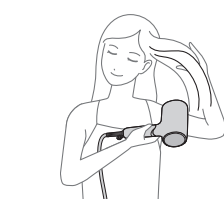
How to Use

- 1 Turn the power switch on.
- 2 Blow your entire hair.



TURBO : Strong hot air
SET : Weak hot air
COLD : Cold air

- [TURBO], [SET] and [COLD] all deliver air containing nanoe.



Blowing the hair roots with hot air can quickly dry your hair.

To increase hair volume

Keeping your hair up from the root, blow it with hot air from below to above.



To reduce hair volume

Combing the hair with your fingers in the direction of hair growth, blow it with hot air from above to below.



How nanoe works

Controls waviness by balancing hair moisture content, making hair glossy and easy to style.

What is nanoe?

Water-wrapped particulate ions.

- They are invisible to the eye.
- They may not be generated in a low-temperature, low-humidity environment since they are generated from moisture in the air. In this case, just ions are generated.

Ion charge

Makes nanoe more easily permeate your hair.

[How to use] To use the function, hold the handle to touch the ion charge panel.

How ion charge works

- Nanoe have a negative charge. Therefore, if you keep applying them to your hair, negative electricity accumulates in your hair, making it more difficult for them to adhere to your hair since negatives repel each other.
- Touching the panel discharges the accumulated negative electricity from your hair, making it easier for nanoe to adhere to your hair.

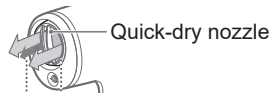
~Continuously permeate your hair, hydrating and moisturizing all the way to the hair tip~

Nozzles

Quick-dry nozzle

You can quickly dry your hair by loosening the wet hair with strong and weak vertical airflow while drying it.

- The quick-dry nozzle is built into the main body.



(Image illustrations)

Styling nozzle

The nozzle narrows the airflow, so you can easily aim at a desired part. Use to style your hair.



Cleaning

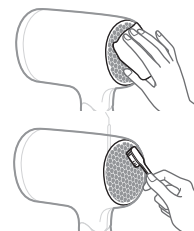
Be sure to turn the power switch OFF and disconnect the power plug from the power outlet. (Except when cleaning the air outlet)

Clean at least once a month and whenever possible

Dust and foreign materials may adhere to and block the opening, resulting in performance degradation as well as malfunction.

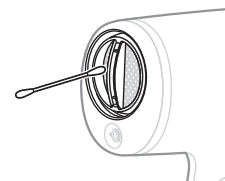
Air inlet

Clean dust and hairs off the surface with a tissue or toothbrush.
(Use a vacuum to remove dust inside.)



Air outlet

- ① Insert the power plug into the power outlet.
- ② Select [COLD] with the power switch.
- ③ Blow off dust and hairs blocking the mesh while removing them with a cotton swab.



Attention

- Do not block the air inlet with a hand, etc. during cleaning.
- Dust may fly during or immediately after cleaning. Confirm that dust does not fly before using the product. (Do not look into the air outlet)

Clean approximately once a month

Nanoe outlet

Clean the outlet to keep enough amount of nanoe.

Insert a new cotton swab and lightly push it in until it stops (approximately 1 cm deep). Then lightly turn it a few times.

