

「スマホで洗濯」アプリ活用ガイド

ドラム式電気洗濯乾燥機(日本国内・家庭用)

品番(ドア左開き/ドア右開き)

LXシリーズ
(タッチパネル)

NA-LX129CL/NA-LX129CR

LXシリーズ

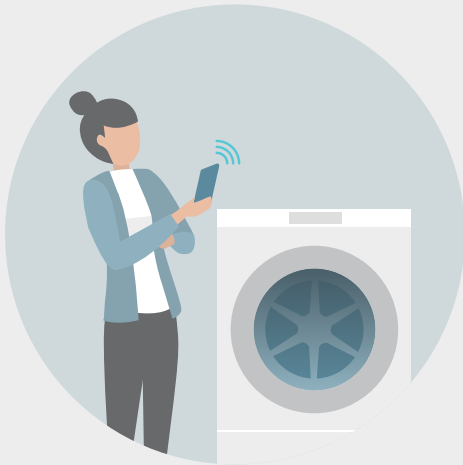
NA-LX127CL/NA-LX127CR

Cuble

NA-VG2800L/NA-VG2800R

もくじ

アプリでできること	2
必要な機器と環境	4
初期設定をする	5
「スマホで洗濯」アプリを使う	6
Q&A	7
エラー表示が出たら	14
無線 LAN/Bluetooth® 使用上のお願ひ	16
著作権など	18



このたびは、パナソニック製品をお買い上げいただき、まことにありがとうございます。

- この「アプリ活用ガイド」をよくお読みのうえ、正しく安全にお使いください。
- ご使用前に取扱説明書の「安全上のご注意」を必ずお読みください。
- 基本のイラストは、LXシリーズを使用しています。
- 洗濯機によって使い方が異なるときは、説明の近くに品番のマークを表示しています。

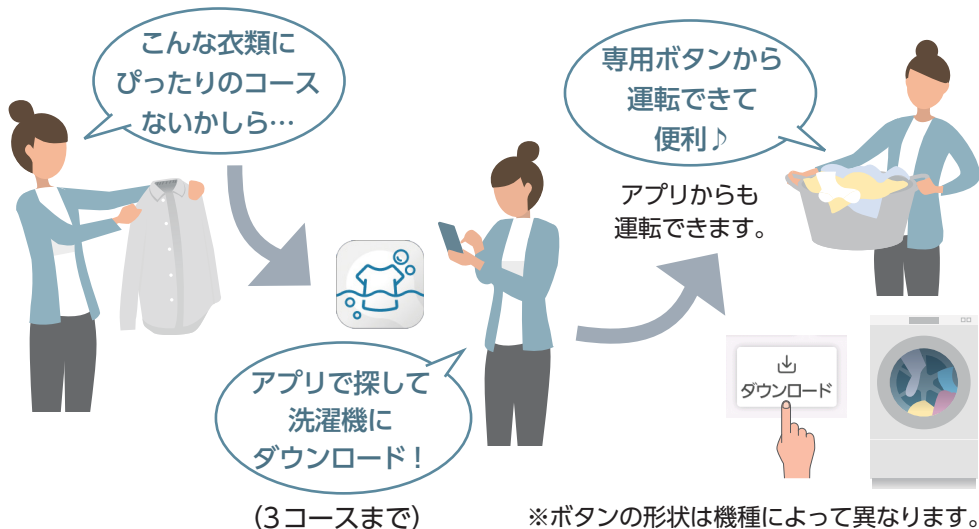
アプリでできること(1) スマートフォンで、もっと便利に

洗濯機に搭載されていないコースで運転できる

LXシリーズ
(タッチパネル)

LXシリーズ

コースのダウンロード



Cuble

アプリ専用コース

コースのダウンロードはできません。
アプリからの操作で運転できます。

洗濯状況や運転終了を
タイムリーにお知らせ

洗濯終了後すぐに衣類が
取り出せる



アプリでできること(2) スマートフォンで、もっと便利に

運転履歴やコース検索で
コース選びをサポート

悩まず最適コースで
運転できる



自動投入の洗剤残量やお手入れ時期を通知
教えてくれるから安心・清潔



- 外から運転
洗濯機を遠隔操作できます
- 自動投入の銘柄設定
お使いの洗剤などの銘柄を選ぶだけで設定できます
- 終了時刻クラウド予測
「おまかせ(洗濯～乾燥)」コースのみより正確な運転終了時間を予測して表示します
LXシリーズ(タッチパネル) **LXシリーズ**

詳しくは

「スマホで洗濯」Q&A をご覧ください

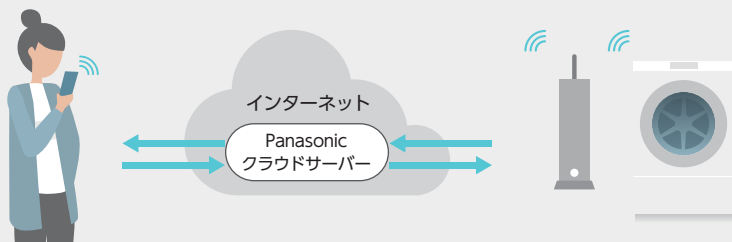
<https://panasonic.jp/s/b/ah4>



- ソフトウェアの利用に関し順守すべき事項について
本製品および本アプリをご利用いただくお客様に対し、注意事項を上記サイトで公開・周知しています。
- 本サービスの内容や機能・デザインは、予告なく変更・終了することがあります。

必要な機器と環境

アプリを使うために必要な機器などを確認しましょう。



Android または iOS (iPhone)のスマートフォン

- 対応OSについて



「スマホで洗濯」Q & A

<https://panasonic.jp/s/b/ah4>

インターネット環境

- ブロードバンド回線であることをご確認ください。

例) FTTH (光ファイバー)、ADSL、CATV (ケーブルテレビ) など

※通信料はお客様のご負担となります。

無線LANブロードバンドルーター

(以下、無線LANルーター)

- 無線LANルーターが2.4 GHz帯の通信規格であることを確認してください。

(通信規格: IEEE802.11b、IEEE802.11g、IEEE802.11n)
上記以外は使用できません。

- WEPのみ対応の機種はお使いいただけません。
- セキュリティ対策のため、必ず暗号化方式WPA3、WPA2、WPAのいずれかの設定ができる無線LANルーターをご使用ください。
- 暗号化方式はWPA3、WPA2 (AES)をおすすめします。

すべての無線LANルーターについての動作保証はしていません。

通信環境によっては、一部機能を提供できない可能性があります。

(モバイルルーターも動作保証はしていません)

お困りの場合は、「アプリの初期設定に関するお問い合わせ」にご連絡ください。▶▶▶ P.28

初期設定をする

あらかじめ CLUB Panasonic の会員登録をしてから、スマートフォンに「スマホで洗濯」アプリをダウンロードして、お使いの洗濯機を登録します。



1

「CLUB Panasonic」(無料)の会員登録をする



<https://club.panasonic.jp/>

2



「スマホで洗濯」アプリ(無料)をインストールする



■ Android
(Google Play)

<https://play.google.com/store/apps/details?id=com.panasonic.SmartLaundry>



■ iOS
(App Store)

<https://apps.apple.com/jp/app/id1245072293>

3

アプリを起動し「CLUB Panasonic」の ID などでログインする



4

アプリの画面に従って洗濯機を My 家電登録する



「スマホで洗濯」アプリを使う



「外から運転」を使う前に

お出かけ前に洗濯機の準備が必要です。

- 1 衣類を入れ、ドアを閉めて、電源を入れる
- 2 投入方法(自動または手動)に合わせて、洗剤などを入れる
- 3 「遠隔」ボタンを押し、遠隔操作待機状態にする

■ 遠隔操作待機状態 点灯



外出先から洗濯機を操作できる状態です。

※ボタンの形状は機種によって異なります。

- 約10分後、「洗濯かごモード」が作動します。(LXシリーズ) (タッチパネル) **Cuble**)
- 洗濯機のドアはロックされます。ドアを開けるには ➡ P.9
- 運転が終了すると、遠隔操作待機状態が解除されます。




- 洗濯機の運転中や一時停止中、洗濯機側で操作していると、遠隔操作できません。
- 📶 ランプが点滅中は、遠隔操作できません。

■ 遠隔操作待機状態を解除するには

「遠隔」ボタンを押し、または電源を切ってください。

洗濯機の通信状況を確認する

操作部のランプで確認できます。

-  **点灯** 通信可能(接続済み)
-  **点滅** 接続待ち
-  **消灯** 未接続

■ ランプの位置

LXシリーズ (タッチパネル) LXシリーズ

Cuble

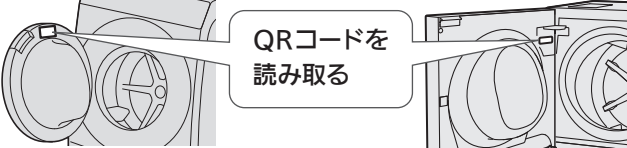


操作部の
右側



天面の
左側

Q&A (1)

Q.ご質問	A.回答
対応端末とアプリのインストール タブレット端末は使えますか？	「スマホで洗濯」アプリはタブレット端末には対応していません。(動作保証していません)
対応しているスマートフォンについて知りたい	対応OSについては、以下のサイトでご確認いただけます。 https://panasonic.jp/s/b/ah4
「スマホで洗濯」アプリがないと使えませんか？	スマートフォンから洗濯機の操作をしたり、運転状況を確認するには、「スマホで洗濯」アプリが必要です。
「スマホで洗濯」アプリは無料ですか？	無料です。ただし、アプリのダウンロードやサービスのご利用には、別途通信料がかかります。
「パナソニック スマートアプリ」は使えますか？	使えません。
初期設定 使用できる無線LANルーターは？	<ul style="list-style-type: none"> ●無線LANルーターについて ➤ P.4 ●すべての無線LANルーターについての動作保証はしていません。
モバイルルーターは使えますか？	モバイルルーターは動作保証していません。
初期設定 「スキャン接続」と「詳細接続」、どちらで接続したらいいですか？	<p>「スキャン接続」をおすすめします。</p> <div style="display: flex; justify-content: space-around; align-items: center;"> <div style="border: 1px solid black; padding: 2px;">LXシリーズ</div> <div>(タッチパネル)</div> <div style="border: 1px solid black; padding: 2px;">Cuble</div> </div> <div style="display: flex; justify-content: space-around; align-items: center; margin-top: 10px;">  </div> <p>スマートフォンでQRコードを読み込めなかった場合や「スキャン接続」できなかった場合は、「詳細接続」をお試しください。</p>
洗濯機のMACアドレスを調べたい	初期設定を進めていくと、途中でアプリ画面に洗濯機のMACアドレスが表示されます。

Q&A (2)

Q. ご質問	A. 回答
My家電登録をしないと使えますか？	洗濯機の情報に登録することで、スマートフォンから洗濯機の遠隔操作ができるようになります。
家族それぞれのスマートフォンから「スマホで洗濯」アプリを使えますか？	使えます。 それぞれ CLUB Panasonic の会員になり、2台目以降のスマートフォンでも My 家電登録を行ってください。
「スマホで洗濯」アプリに、2台以上の洗濯機を登録して使うことはできますか？	可能です。 2台目以降の洗濯機も、1台目と同様に初期設定をしてください。My 家電登録時にそれぞれ区別しやすい名前を付けることをおすすめします。
家族で同じ ID を使っても大丈夫？	CLUB Panasonic 会員利用規約では、お一人ずつ会員になっていただくことを推奨しています。
洗濯機の「遠隔」ランプが点灯していないと、アプリは使えますか？	「外から運転」を使うためには、「遠隔」ランプを点灯させる（遠隔操作待機状態にする）必要があります。 「外から運転」以外は、「遠隔」ランプが点灯していなくても使えます。
「スマホで洗濯」アプリの動作がおかしい	インターネットに接続されている状態でアプリの動作がおかしい場合は、再度インストールすることをおすすめします。 ➡ P.5
洗濯機側の情報の更新が遅い LXシリーズ (タッチパネル)	洗濯機側の「スタンバイモード」の設定を「入」にすると、洗濯機の電源を切っても Wi-Fi 接続を継続し、情報の更新がスムーズになります。 ≡ (メニュー) → 「設定変更」 → 「スタンバイモード」 → 「入」 → 「決定」を選ぶ。

Q&A (3)

Q. ご質問

A. 回答

外から運転

「外から運転」で自動投入をするとき、洗濯機側に必要な準備は？

お出かけ前に、以下の点を確認してください。

- 衣類がドラムに入っていること。
- 水栓が開いていること。
- 自動投入が設定されていること。
- 乾燥運転する場合は、十分に換気されていること。(結露予防のため)
- 洗濯機の「遠隔」ランプが点灯していること。(点灯していない場合は、「遠隔」ボタンを押してランプを点灯させてください)

洗剤などを手動投入するとき、「外から運転」はできますか？

可能です。
洗剤などを手動投入し、洗濯機の「遠隔」ボタンを押してください。

設定した予約を取り消したり、変更できますか？

洗濯機側で運転がスタートする前なら、スマートフォンで予約の変更や取り消しができます。
予約確認画面から変更、取り消しをしてください。

運転を停止させることはできますか？

運転がスタートしたあとは、スマートフォンで停止させることはできません。

洗濯機のドアが開かないので、先に帰宅した家族が衣類を追加できない

ドアロック中です。
ドアを開けるには

- 遠隔操作待機中(「遠隔」ランプ点灯)は、洗濯機の「遠隔」ボタンを押す。
- 運転中や予約中、「洗濯かごモード」中は、「スタート」ボタンを押す。

予約した時刻に洗濯が終了しなかった

終了時刻には多少の誤差が生じます。
特に乾燥運転の場合は、誤差が大きくなります。

Q&A (4)

Q. ご質問	A. 回答
ステータス通知 どんなときに通知が届きますか？	アプリの画面を閉じているときに通知されます。 ただし、あらかじめスマートフォンでアプリの「通知設定」を有効にし、アプリ内の通知設定リストから、希望する項目を選んでおく必要があります。
ステータス通知 通知の設定をしたのに、全く通知されない もしくは、通知されたり、されなかったりする	以下の場合には通知されません。 ●洗濯機、または接続している無線LANルーターの電源が入っていない。 ●ネットワーク障害が発生している。 ●スマートフォンでアプリの「通知設定」をしていない。 またはアプリで通知設定リストから通知項目を選んでいる。(両方とも設定する必要があります) ●アプリの画面を開いている。
ステータス通知 通知される内容と、実際の運転状況が異なっている	通信状況や、サーバーの状況、スマートフォンの状態によっては、数十分以上遅れて通知されたり、通知が配信されない場合があります。
運転状況確認 洗濯機側で必要な準備はありますか？	洗濯機と無線LANルーターの電源が入っている必要があります。
運転状況確認 スマートフォンに表示される残り時間や内容が、実際と異なっている	「スマホで洗濯」アプリで表示される「残り時間」は目安です。 通信状況や、サーバーの状況、スマートフォンの状態によっては、運転状況が遅れて表示されるなど、実際の洗濯機の状態と異なることがあります。

Q&A (5)

	Q.ご質問	A.回答
自動投入設定	設定しておくのと、どんなときに便利?	衣類の量に合った洗剤などの最適量を洗濯機が判断し、自動で投入します。
	洗濯機側を手動投入に設定しているときも、アプリで「自動投入設定」ができますか?	設定できます。
	使っている洗剤などが設定の一覧にない	お使いの洗剤などのパッケージの記載をご確認いただき、「水30Lに対する使用量(ml)」を設定してください。
	「自動投入設定」の操作ができない	以下の点をご確認ください。 ●洗濯機、接続している無線LANルーターの電源が入っていること。 ●洗濯機が運転中や予約中でないこと。
	「選べるタンク」に使用する剤をアプリで変更できますか? LXシリーズ [®] (タッチパネル) LXシリーズ [®]	できません。洗濯機側で変更してください。
コースのダウンロード	登録したコースを変更または削除したい LXシリーズ [®] (タッチパネル) LXシリーズ [®]	アプリで変更／削除できます。
	どのコースを登録したか忘れてしまったら? LXシリーズ [®]	洗濯機側では確認できません。アプリで確認してください。

Q&A (6)

Q. ご質問	A. 回答
<p data-bbox="42 183 84 478">アプリ専用コース</p> <p data-bbox="100 247 392 359">洗濯機のコースランプが点灯せずに運転している</p> <p data-bbox="140 375 229 406">Cuble</p>	<p data-bbox="425 279 1052 383">アプリ専用コースを運転中です。コース選択ボタンを押すと、“AP (数字)”が表示されず。</p>
<p data-bbox="42 510 84 869">終了時刻クラウド予測</p> <p data-bbox="100 590 392 702">アプリの予測時間が、洗濯機側の残り時間に反映されない</p> <p data-bbox="106 710 397 742">LXシリーズ (タッチパネル)</p> <p data-bbox="106 758 263 790">LXシリーズ</p>	<p data-bbox="425 678 896 710">予測時間は、アプリでのみ表示されます。</p>

Q&A (7)

Q. ご質問

A. 回答


- 「スマホで洗濯」アプリの使用をやめたい
- 不正アクセスによる使用が疑われる

Wi-Fi 設定をお買い上げ時の状態に戻してください。
(洗濯機側で操作します)
アプリのサービス利用の停止もおすすめします。

LXシリーズ (タッチパネル)

- ① 電源を入れ、三 (メニュー) → [Wi-Fi 接続] → [確認] を選ぶ。
- ② [Wi-Fi 初期化] → [はい] → [決定] を選ぶ。

LXシリーズ **Cuble**

- ① 電源「切」の状態状態で、「遠隔」ボタンを押しながら  を押す。
 - “co1” が表示。
- ② [遠隔] ボタンを3秒以上押す。
 - [ピー] と6回鳴り、電源が切れる。

初期化

洗濯機を廃棄、譲渡したい

Wi-Fi 設定や洗濯機側の設定、運転履歴など、
すべての内容をお買い上げ時の状態に戻してください。
(全初期化)
(洗濯機側で操作します)

LXシリーズ (タッチパネル)

- ① 電源を入れ、三 (メニュー) → [設定変更] を選ぶ。
- ② [初期化] → [お買い上げ時の状態に戻す] → [はい] → [決定] を選ぶ。

LXシリーズ

- ① 電源を入れ、「洗乾切換」ボタンを押し「乾燥」を選び、「洗い」ボタンを3秒以上押す。
 - 3桁の数字が表示。
- ② [遠隔] ボタンを3秒以上押す。
 - [ピー] と6回鳴り、電源が切れる。


Cuble

- ① 電源を入れ、「洗乾切換」ボタンを押し「洗濯」を選ぶ。
- ② [コース] ボタンを押し「槽洗浄 / 乾燥」を選び、「水温」ボタンを3秒以上押す。
 - 3桁の数字が表示。
- ③ [遠隔] ボタンを3秒以上押す。
 - [ピー] と6回鳴り、電源が切れる。

エラー表示が出たら(1)

洗濯機の表示	処置
U81	<ul style="list-style-type: none">●洗濯機と無線LANルーターの接続に失敗しました。以下をご確認ください。<ul style="list-style-type: none">•ルーターの電源が入っていない。 →電源を入れてください。•ルーターと洗濯機の距離が遠い。 →ルーターを近づけてください。•電子レンジなど電波を使用する機器が近くにある。 →距離を離してください。 →機器の使用を中断するか、時間を置いてから再度お試しください。•複数の機器がルーターに接続されている。 →使っていない機器の電源を切ってください。
U82	<ul style="list-style-type: none">●サーバーとの通信エラーです。●インターネット接続に異常が発生している可能性があります。 →原因が分からない場合は、プロバイダーや回線業者、ルーターの製造元にお問い合わせください。
U83	<ul style="list-style-type: none">●「詳細接続」で、ルーターのSSIDまたはパスワードが間違っています。 →ルーターの記載をご確認ください。●洗濯機とルーターの接続に失敗しました。 →上記「U81」をご確認ください。
U84	<ul style="list-style-type: none">●「スキャン接続」に失敗しました。以下をご確認ください。<ul style="list-style-type: none">•スマートフォンのBluetooth®の設定がOFFになっている。•QRコードが正しく読み取れない。 →Bluetooth®の設定がONになっているか確認し、再度接続してください。 それでも接続できない場合は「詳細接続」をお試しください。

エラー表示が出たら (2)

洗濯機の表示	処置
<p>U85</p> <p>LXシリーズ LXシリーズ (タッチパネル)</p>	<ul style="list-style-type: none">●ソフトウェアが正常に更新できませんでした。<ol style="list-style-type: none">① 電源プラグを抜き、しばらく時間を置く。② 再度、電源プラグを差し込み、電源を入れる。 →本体ソフトウェアの更新が再開。<ul style="list-style-type: none">・「U85」の表示を繰り返す場合は、お買い上げの販売店にご連絡ください。
<p>U86</p> <p>LXシリーズ LXシリーズ (タッチパネル)</p>	<ul style="list-style-type: none">●コースが正常にダウンロードできませんでした。<ol style="list-style-type: none">① 本体の電源を入れ直す。② アプリからコースのダウンロードを再度行う。<ul style="list-style-type: none">・「U86」の表示を繰り返す場合は、お買い上げの販売店にご連絡ください。
<p>アプリに「洗濯機と通信できません」のような表示が出た</p>	<ul style="list-style-type: none">●しばらくしてから再度通信するか、次の方法で接続状態を確認してください。<p>LXシリーズ (タッチパネル)</p><p>≡ (メニュー) → 「Wi-Fi 接続」 → 「確認」 → 「接続状態確認」を選ぶ。</p><p>LXシリーズ Cuble</p><p>電源「切」の状態で、「遠隔」ボタンを押しながら  を押し、「co1」が表示されたら「洗乾切換」ボタンを押す。</p><p>→「U81」「U82」などが表示されたら、接続エラーです。上記をご確認ください。</p>

無線LAN/Bluetooth® 使用上のお願い(1)

■使用周波数帯

本機は2.4 GHz帯の周波数帯を使用しますが、他の無線機器も同じ周波数を使っていることがあります。

他の無線機器との電波干渉を防止するため、下記事項に留意してご使用ください。

無線機器使用上の注意事項

この機器の使用周波数帯域では、電子レンジなどの産業・科学・医療機器のほか、工場の製造ラインなどで使用される移動体識別用の構内無線局(免許を要する無線局)および特定小電力無線局(免許を要しない無線局)、ならびにアマチュア無線局(免許を要する無線局)が運用されています。

1. この機器を使用する前に、近くで移動体識別用の構内無線局および特定小電力無線局ならびにアマチュア無線局が運用されていない事を確認してください。
2. 万一、この機器から移動体識別用の構内無線局に対して有害な電波干渉の事例が発生した場合には、すみやかに場所を変更するか、または電波の使用を停止したうえ、下記連絡先にご連絡いただき、混信回避のための処置など(例えば、パーティションの設置など)についてご相談ください。
3. その他、この機器から移動体識別用の特定小電力無線局あるいはアマチュア無線局に対して有害な電波干渉の事例が発生した場合など何かお困りのことが起きた時は、次の連絡先へお問い合わせください。

連絡先：パナソニック株式会社

アプリの初期設定に関するお問い合わせ ➤ P.28

■機器認定

本機は、電波法に基づく工事設計認証を受けた無線装置を内蔵していますので、無線局の免許は不要です。

ただし、以下の行為は、電波法で禁止されています。

- 分解/改造する。
- 定格銘板に記載の適合表示を消す。

無線LAN/Bluetooth® 使用上のお願い(2)

■使用制限

使用に当たり、以下の制限がありますのであらかじめご了承ください。

制限をお守りいただけなかった場合、および本機の使用または使用不能から生じる付随的な損害などについては、当社は一切の責任を負いかねます。

- 日本国内でのみ使用できます。
- 利用権限のない無線ネットワークには接続しないでください。
無線ネットワーク環境の自動検索時に利用する権限のない無線ネットワーク (SSID※) が表示されることがありますが、接続すると不正アクセスと見なされるおそれがあります。
- 本機は電気通信事業者 (移動通信会社、固定通信会社、インターネットプロバイダ等) の通信回線 (公衆無線LANを含む) に直接接続することができません。
本機をインターネットに接続する場合は、必ず無線LAN ルーター等を経由し接続してください。
- 磁場、静電気、電波障害が発生するところで使用しないでください。
次の機器の付近などで使用すると、通信が途切れたり、速度が遅くなることがあります。
 - ・電子レンジ
 - ・他の無線LAN/Bluetooth® 機器
 - ・その他 2.4 GHz 帯の電波を使用する機器 (デジタルコードレス電話機、ワイヤレスオーディオ機器、ゲーム機、パソコン周辺機器など)
 - ・電波が反射しやすい金属物など

※無線LANで特定のネットワークを識別するための名前のことです。このSSIDが双方の機器で一致した場合、通信可能になります。

■セキュリティ対策

- 無線LANは電波を使ってデータを送受信するため、不正なアクセスを受けるおそれがあります。データの安全を確保するため、セキュリティ対策を行ってください。▶▶▶ P.4
セキュリティ対策を実施せず問題が発生した場合、当社は一切の責任を負いかねますのでご了承ください。
- 無線LANルーターのパスワード (暗号化キー) は、無線LANルーターの取扱説明書を参照して、セキュリティに配慮して設定してください。

■ファームウェア等のソフトウェアについて

- 本機は、インターネットを通じて当社のソフトウェアアップデートサーバーに接続し、自身のソフトウェアを最新版に更新する機能を持っています。更新中は無線通信が一時中断されるため、通信が途切れたり、速度が遅くなる場合があります。
- ソフトウェアの解析、改造は行わないでください。

著作権など(1)

- AndroidおよびGoogle PlayはGoogle LLCの商標または登録商標です。
- iPhoneは、米国および他の国々で登録されたApple Inc. の商標です。iPhoneの商標は、アイホン株式会社のライセンスに基づき使用されています。
- App StoreはApple Inc. のサービスマークです。
- “Wi-Fi[®]”は、“Wi-Fi Alliance[®]”の登録商標です。
- “WPA[™]”、“WPA2[™]”および“WPA3[™]”は、“Wi-Fi Alliance[®]”の商標です。
- QRコードは、株式会社デンソーウェーブの登録商標です。
- “Wi-Fi CERTIFIED[™]”ロゴは、“Wi-Fi Alliance[®]”の認証マークです。



- Bluetooth[®]のワードマークおよびロゴは、Bluetooth SIG, Inc. が所有する登録商標です。
- パナソニック株式会社は、これらのマークをライセンスに基づいて使用しています。その他の商標およびトレードネームは、それぞれの所有者に帰属します。
- その他、本書に記載されている各種名称、会社名、商品名などは各社の商標または登録商標です。なお、本文中では[™]、[®]マークは一部記載していません。

■ソフトウェアについて

本製品は、以下の種類のソフトウェアから構成されています。

- (1) パナソニック株式会社 (以下パナソニック) により、またはパナソニックのために開発されたソフトウェア
- (2) 第三者が保有しており、パナソニックにライセンスされたソフトウェア
- (3) 条件に基づきライセンスされたオープンソースソフトウェア

上記(3)に分類されるソフトウェアは、これら単体で有用であることを期待して頒布されますが、「商品性」または「特定の目的についての適合性」についての黙示の保証をしないことを含め、一切の保証はなされません。

cJSON

Copyright (c) 2009 Dave Gamble
Copyright (c) 2009-2017 Dave Gamble and cJSON contributors

Permission is hereby granted, free of charge, to any person obtaining a copy of this software and associated documentation files (the "Software"), to deal in the Software without restriction, including without limitation the rights to use, copy, modify, merge, publish, distribute, sublicense, and/or sell copies of the Software, and to permit persons to whom the Software is furnished to do so, subject to the following conditions:

The above copyright notice and this permission notice shall be included in all copies or substantial portions of the Software.

THE SOFTWARE IS PROVIDED "AS IS", WITHOUT WARRANTY OF ANY KIND, EXPRESS OR IMPLIED, INCLUDING BUT NOT LIMITED TO THE WARRANTIES OF MERCHANTABILITY, FITNESS FOR A PARTICULAR PURPOSE AND NONINFRINGEMENT. IN NO EVENT SHALL THE AUTHORS OR COPYRIGHT HOLDERS BE LIABLE FOR ANY CLAIM, DAMAGES OR OTHER LIABILITY, WHETHER IN AN ACTION OF CONTRACT, TORT OR OTHERWISE, ARISING FROM, OUT OF OR IN CONNECTION WITH THE SOFTWARE OR THE USE OR OTHER DEALINGS IN THE SOFTWARE.

wpa_supplicant

Copyright (c) 2005-2009, Jouni Malinen <j@w1.fi>
Copyright (c) 2008, Jouni Malinen <j@w1.fi>

wpa_supplicant
=====

Copyright (c) 2003-2019, Jouni Malinen <j@w1.fi> and contributors
All Rights Reserved.

This program is licensed under the BSD license (the one with advertisement clause removed).

If you are submitting changes to the project, please see CONTRIBUTIONS file for more instructions.

License

This software may be distributed, used, and modified under the terms of BSD license:

Redistribution and use in source and binary forms, with or without modification, are permitted provided that the following conditions are met:

1. Redistributions of source code must retain the above copyright notice, this list of conditions and the following disclaimer.
2. Redistributions in binary form must reproduce the above copyright notice, this list of conditions and the following disclaimer in the documentation and/or other materials provided with the distribution.
3. Neither the name(s) of the above-listed copyright holder(s) nor the names of its contributors may be used to endorse or promote products derived from this software without specific prior written

著作権など(2)

permission.

THIS SOFTWARE IS PROVIDED BY THE COPYRIGHT HOLDERS AND CONTRIBUTORS "AS IS" AND ANY EXPRESS OR IMPLIED WARRANTIES, INCLUDING, BUT NOT LIMITED TO, THE IMPLIED WARRANTIES OF MERCHANTABILITY AND FITNESS FOR A PARTICULAR PURPOSE ARE DISCLAIMED. IN NO EVENT SHALL THE COPYRIGHT OWNER OR CONTRIBUTORS BE LIABLE FOR ANY DIRECT, INDIRECT, INCIDENTAL, SPECIAL, EXEMPLARY, OR CONSEQUENTIAL DAMAGES (INCLUDING, BUT NOT LIMITED TO, PROCUREMENT OF SUBSTITUTE GOODS OR SERVICES; LOSS OF USE, DATA, OR PROFITS; OR BUSINESS INTERRUPTION) HOWEVER CAUSED AND ON ANY THEORY OF LIABILITY, WHETHER IN CONTRACT, STRICT LIABILITY, OR TORT (INCLUDING NEGLIGENCE OR OTHERWISE) ARISING IN ANY WAY OUT OF THE USE OF THIS SOFTWARE, EVEN IF ADVISED OF THE POSSIBILITY OF SUCH DAMAGE.

Mbed TLS

Copyright (C) 2006-2015, ARM Limited, All Rights Reserved
Copyright (C) 2006-2016, ARM Limited, All Rights Reserved
Copyright (C) 2006-2017, ARM Limited, All Rights Reserved
Copyright (C) 2006-2018, ARM Limited, All Rights Reserved
Copyright (C) 2006-2018, Arm Limited (or its affiliates), All Rights Reserved
Copyright (C) 2006-2018, Arm Limited (or its affiliates), All Rights Reserved.
Copyright (C) 2006-2019, ARM Limited, All Rights Reserved
Copyright (C) 2006-2019, Arm Limited (or its affiliates), All Rights Reserved
Copyright (C) 2016, ARM Limited, All Rights Reserved
Copyright (C) 2016-2018, ARM Limited, All Rights Reserved
Copyright (C) 2018, Arm Limited (or its affiliates), All Rights Reserved
Copyright (C) 2018, Arm Limited, All Rights Reserved

RealtekSDK

(C) COPYRIGHT 2011 STMicroelectronics
(c) COPYRIGHT 2017 Realtek Semiconductor Corporation
Copyright (C) 2019 Amazon.com, Inc. or its affiliates. All Rights Reserved.
Copyright (c) 2006-2013 ARM Limited
Copyright (c) 2009-2016 ARM Limited. All rights reserved.
Copyright (c) 2009-2017 ARM Limited. All rights reserved.
Copyright (c) 2009-2018 Arm Limited. All rights reserved.
Copyright (c) 2013 ARM LIMITED All rights reserved.
Copyright (c) 2013 Realtek Semiconductor Corp.
Copyright (c) 2013-2016 Realtek Semiconductor Corp.
Copyright (c) 2014, Realtek Semiconductor Corp. All rights reserved.
Copyright (c) 2015, Realsil Semiconductor Corporation. All rights reserved.
Copyright (c) 2015, Realtek Semiconductor Corp. All rights reserved.
Copyright (c) 2015, Realtek Semiconductor Corporation. All rights reserved.
Copyright (c) 2017, Realsil Semiconductor Corporation. All rights reserved.
Copyright (c) 2017, Realtek Semiconductor Corporation. All rights reserved.
Copyright (c) 2017-2018 Arm Limited. All rights reserved.
Copyright 2014 Tencent. All rights reserved.
Copyright(c) 2007 - 2012 Realtek Corporation. All rights reserved.
Copyright(c) 2007 - 2016 Realtek Corporation. All rights reserved.
Copyright(c) 2007 - 2017 Realtek Corporation. All rights reserved.
Copyright(c) 2007 - 2018 Realtek Corporation. All rights reserved.
Copyright(c) 2014, Realtek Semiconductor Corporation. All rights reserved.
Copyright(c) 2015, Realtek Semiconductor Corporation. All rights reserved.
Copyright(c) 2016, Realtek Semiconductor Corporation. All rights reserved.
Copyright(c) 2017, Realtek Semiconductor Corporation. All rights reserved.
Copyright(c) 2019, Realtek Semiconductor Corporation. All rights reserved.
copyright Kulesh Shanmugasundaram (kulesh [squiggly] isis.poly.

edu)

Apache License

Version 2.0, January 2004
<http://www.apache.org/licenses/>

TERMS AND CONDITIONS FOR USE, REPRODUCTION, AND DISTRIBUTION

1. Definitions.

"License" shall mean the terms and conditions for use, reproduction, and distribution as defined by Sections 1 through 9 of this document. "Licensor" shall mean the copyright owner or entity authorized by the copyright owner that is granting the License.

"Legal Entity" shall mean the union of the acting entity and all other entities that control, are controlled by, or are under common control with that entity. For the purposes of this definition, "control" means (i) the power, direct or indirect, to cause the direction or management of such entity, whether by contract or otherwise, or (ii) ownership of fifty percent (50%) or more of the outstanding shares, or (iii) beneficial ownership of such entity.

"You" (or "Your") shall mean an individual or Legal Entity exercising permissions granted by this License.

"Source" form shall mean the preferred form for making modifications, including but not limited to software source code, documentation source, and configuration files.

"Object" form shall mean any form resulting from mechanical transformation or translation of a Source form, including but not limited to compiled object code, generated documentation, and conversions to other media types.

"Work" shall mean the work of authorship, whether in Source or Object form, made available under the License, as indicated by a copyright notice that is included in or attached to the work (an example is provided in the Appendix below).

"Derivative Works" shall mean any work, whether in Source or Object form, that is based on (or derived from) the Work and for which the editorial revisions, annotations, elaborations, or other modifications represent, as a whole, an original work of authorship. For the purposes of this License, Derivative Works shall not include works that remain separable from, or merely link (or bind by name) to the interfaces of, the Work and Derivative Works thereof.

"Contribution" shall mean any work of authorship, including the original version of the Work and any modifications or additions to that Work or Derivative Works thereof, that is intentionally submitted to Licensor for inclusion in the Work by the copyright owner or by an individual or Legal Entity authorized to submit on behalf of the copyright owner. For the purposes of this definition, "submitted" means any form of electronic, verbal, or written communication sent to the Licensor or its representatives, including but not limited to communication on electronic mailing lists, source code control systems, and issue tracking systems that are managed by, or on behalf of, the Licensor for the purpose of discussing and improving the Work, but excluding communication that is conspicuously marked or otherwise designated in writing by the copyright owner as "Not a Contribution."

"Contributor" shall mean Licensor and any individual or Legal Entity on behalf of whom a Contribution has been received by Licensor and subsequently incorporated within the Work.

2. Grant of Copyright License.

Subject to the terms and conditions of this License, each Contributor hereby grants to You a perpetual, worldwide, non-exclusive, non-charge, royalty-free, irrevocable copyright license to reproduce, prepare Derivative Works of, publicly display, publicly perform, sublicense, and distribute the Work and such Derivative Works in Source or Object form.

3. Grant of Patent License.

Subject to the terms and conditions of this License, each Contributor hereby grants to You a perpetual, worldwide, non-exclusive, non-charge, royalty-free, irrevocable (except as stated in this section) patent license to make, have made, use, offer to sell, sell, import, and otherwise transfer the Work, where such license applies only to those patent claims licensable by such Contributor that are necessarily infringed by their Contribution(s) alone or by combination

著作権など(3)

of their Contribution(s) with the Work to which such Contribution(s) was submitted. If You institute patent litigation against any entity (including a cross-claim or counterclaim in a lawsuit) alleging that the Work or a Contribution incorporated within the Work constitutes direct or contributory patent infringement, then any patent licenses granted to You under this License for that Work shall terminate as of the date such litigation is filed.

4. Redistribution.

You may reproduce and distribute copies of the Work or Derivative Works thereof in any medium, with or without modifications, and in Source or Object form, provided that You meet the following conditions:

- (a) You must give any other recipients of the Work or Derivative Works a copy of this License; and
- (b) You must cause any modified files to carry prominent notices stating that You changed the files; and
- (c) You must retain, in the Source form of any Derivative Works that You distribute, all copyright, patent, trademark, and attribution notices from the Source form of the Work, excluding those notices that do not pertain to any part of the Derivative Works; and
- (d) If the Work includes a "NOTICE" text file as part of its distribution, then any Derivative Works that You distribute must include a readable copy of the attribution notices contained within such NOTICE file, excluding those notices that do not pertain to any part of the Derivative Works, in at least one of the following places: within a NOTICE text file distributed as part of the Derivative Works; within the Source form or documentation, if provided along with the Derivative Works; or, within a display generated by the Derivative Works, if and wherever such third-party notices normally appear. The contents of the NOTICE file are for informational purposes only and do not modify the License. You may add Your own attribution notices within Derivative Works that You distribute, alongside or as an addendum to the NOTICE text from the Work, provided that such additional attribution notices cannot be construed as modifying the License.

You may add Your own copyright statement to Your modifications and may provide additional or different license terms and conditions for use, reproduction, or distribution of Your modifications, or for any such Derivative Works as a whole, provided Your use, reproduction, and distribution of the Work otherwise complies with the conditions stated in this License.

5. Submission of Contributions.

Unless You explicitly state otherwise, any Contribution intentionally submitted for inclusion in the Work by You to the Licensor shall be under the terms and conditions of this License, without any additional terms or conditions. Notwithstanding the above, nothing herein shall supersede or modify the terms of any separate license agreement you may have executed with Licensor regarding such Contributions.

6. Trademarks.

This License does not grant permission to use the trade names, trademarks, service marks, or product names of the Licensor, except as required for reasonable and customary use in describing the origin of the Work and reproducing the content of the NOTICE file.

7. Disclaimer of Warranty.

Unless required by applicable law or agreed to in writing, Licensor provides the Work (and each Contributor provides its Contributions) on an "AS IS" BASIS, WITHOUT WARRANTIES OR CONDITIONS OF ANY KIND, either express or implied, including, without limitation, any warranties or conditions of TITLE, NON-INFRINGEMENT, MERCHANTABILITY, or FITNESS FOR A PARTICULAR PURPOSE. You are solely responsible for determining the appropriateness of using or redistributing the Work and assume any risks associated with Your exercise of permissions under this License.

8. Limitation of Liability.

In no event and under no legal theory, whether in tort (including negligence), contract, or otherwise, unless required by applicable law (such as deliberate and grossly negligent acts) or agreed to in writing, shall any Contributor be liable to You for damages, including any direct, indirect, special, incidental, or consequential damages of any character arising as a result of this License or out of the use or inability to use the Work (including but not limited to damages for loss of goodwill, work stoppage, computer failure or malfunction, or any and all other commercial damages or losses), even if such

Contributor has been advised of the possibility of such damages.

9. Accepting Warranty or Additional Liability.

While redistributing the Work or Derivative Works thereof, You may choose to offer, and charge a fee for, acceptance of support, warranty, indemnity, or other liability obligations and/or rights consistent with this License. However, in accepting such obligations, You may act only on Your own behalf and on Your sole responsibility, not on behalf of any other Contributor, and only if You agree to indemnify, defend, and hold each Contributor harmless for any liability incurred by, or claims asserted against, such Contributor by reason of your accepting any such warranty or additional liability.

END OF TERMS AND CONDITIONS

著作権など(4)

APPENDIX: How to apply the Apache License to your work.

To apply the Apache License to your work, attach the following boilerplate notice, with the fields enclosed by brackets "[]" replaced with your own identifying information. (Don't include the brackets!) The text should be enclosed in the appropriate comment syntax for the file format. We also recommend that a file or class name and description of purpose be included on the same "printed page" as the copyright notice for easier identification within third-party archives.

Copyright [yyyy] [name of copyright owner]

Licensed under the Apache License, Version 2.0 (the "License"); you may not use this file except in compliance with the License. You may obtain a copy of the License at

<http://www.apache.org/licenses/LICENSE-2.0>

Unless required by applicable law or agreed to in writing, software distributed under the License is distributed on an "AS IS" BASIS, WITHOUT WARRANTIES OR CONDITIONS OF ANY KIND, either express or implied.

See the License for the specific language governing permissions and limitations under the License.

lwIP

Copyright (c) 1997 Global Election Systems Inc.
Copyright (c) 2001-2003 Swedish Institute of Computer Science.
Copyright (c) 2001-2003 Swedish Institute of Computer Science. All rights reserved.
Copyright (c) 2001-2004 Axon Digital Design B.V., The Netherlands. All rights reserved.
Copyright (c) 2001-2004 Leon Woestenberg <leon.woestenberg@gmx.net>
Copyright (c) 2001-2004 Swedish Institute of Computer Science. All rights reserved.
Copyright (c) 2002 CITEL Technologies Ltd. All rights reserved.
Copyright (c) 2002-2003, Adam Dunkels.
Copyright (c) 2002-2003, Adam Dunkels. All rights reserved.
Copyright (c) 2003 by Marc Boucher, Services Informatiques (MBS) inc.
Copyright (c) 2003-2004 Axon Digital Design B.V., The Netherlands. All rights reserved.
Copyright (c) 2003-2004 Leon Woestenberg <leon.woestenberg@axon.tv>
Copyright (c) 2007 Dominik Spies <kontakt@dspies.de> All rights reserved.
Copyright (c) 2010 Inico Technologies Ltd. All rights reserved.
Copyright (c) 2016 The MINIX 3 Project. All rights reserved.

```
/*  
 * Copyright (c) 2001, 2002 Swedish Institute of Computer Science.  
 * All rights reserved.  
 *  
 * Redistribution and use in source and binary forms, with or without  
 * modification, are permitted provided that the following conditions  
 * are met:  
 *  
 * 1. Redistributions of source code must retain the above copyright  
 * notice, this list of conditions and the following disclaimer.  
 * 2. Redistributions in binary form must reproduce the above  
 * copyright notice, this list of conditions and the following  
 * disclaimer in the documentation and/or other materials  
 * provided with the distribution.  
 * 3. The name of the author may not be used to endorse or  
 * promote products derived from this software without specific  
 * prior written permission.  
 *  
 * THIS SOFTWARE IS PROVIDED BY THE AUTHOR ``AS IS'' AND  
 * ANY EXPRESS OR IMPLIED WARRANTIES, INCLUDING,  
 * BUT NOT LIMITED TO, THE IMPLIED WARRANTIES OF  
 * MERCHANTABILITY AND FITNESS FOR A PARTICULAR  
 * PURPOSE ARE DISCLAIMED. IN NO EVENT SHALL THE  
 * AUTHOR BE LIABLE FOR ANY DIRECT, INDIRECT, INCIDENTAL,
```

```
* SPECIAL, EXEMPLARY, OR CONSEQUENTIAL DAMAGES  
* (INCLUDING, BUT NOT LIMITED TO, PROCUREMENT OF  
* SUBSTITUTE GOODS OR SERVICES; LOSS OF USE, DATA, OR  
* PROFITS; OR BUSINESS INTERRUPTION) HOWEVER CAUSED  
* AND ON ANY THEORY OF LIABILITY, WHETHER IN CONTRACT,  
* STRICT LIABILITY, OR TORT (INCLUDING NEGLIGENCE OR  
* OTHERWISE) ARISING IN ANY WAY OUT OF THE USE OF THIS  
* SOFTWARE, EVEN IF ADVISED OF THE POSSIBILITY OF SUCH  
* DAMAGE.  
*  
* This file is part of the lwIP TCP/IP stack.  
*  
* Author: Adam Dunkels <adam@sics.se>  
*/
```

FreeRTOS

Copyright (C) 2017 Amazon.com, Inc. or its affiliates. All Rights Reserved.
Copyright (C) 2019 Amazon.com, Inc. or its affiliates. All Rights Reserved.

The FreeRTOS kernel is released under the MIT open source license, the text of which is provided below.

This license covers the FreeRTOS kernel source files, which are located in the /FreeRTOS/Source directory of the official FreeRTOS kernel download. It also covers most of the source files in the demo application projects, which are located in the /FreeRTOS/Demo directory of the official FreeRTOS download. The demo projects may also include third party software that is not part of FreeRTOS and is licensed separately to FreeRTOS. Examples of third party software includes header files provided by chip or tools vendors, linker scripts, peripheral drivers, etc. All the software in subdirectories of the /FreeRTOS directory is either open source or distributed with permission, and is free for use. For the avoidance of doubt, refer to the comments at the top of each source file.

License text:

```
-----  
Copyright (C) 2019 Amazon.com, Inc. or its affiliates. All Rights Reserved.  
Permission is hereby granted, free of charge, to any person obtaining a copy of this software and associated documentation files (the "Software"), to deal in the Software without restriction, including without limitation the rights to use, copy, modify, merge, publish, distribute, sublicense, and/or sell copies of the Software, and to permit persons to whom the Software is furnished to do so, subject to the following conditions:
```

The above copyright notice and this permission notice shall be included in all copies or substantial portions of the Software.

THE SOFTWARE IS PROVIDED "AS IS", WITHOUT WARRANTY OF ANY KIND, EXPRESS OR IMPLIED, INCLUDING BUT NOT LIMITED TO THE WARRANTIES OF MERCHANTABILITY, FITNESS FOR A PARTICULAR PURPOSE AND NONINFRINGEMENT. IN NO EVENT SHALL THE AUTHORS OR COPYRIGHT HOLDERS BE LIABLE FOR ANY CLAIM, DAMAGES OR OTHER LIABILITY, WHETHER IN AN ACTION OF CONTRACT, TORT OR OTHERWISE, ARISING FROM, OUT OF OR IN CONNECTION WITH THE SOFTWARE OR THE USE OR OTHER DEALINGS IN THE SOFTWARE.

newlib

The newlib subdirectory is a collection of software from several sources.

Each file may have its own copyright/license that is embedded in the source file. Unless otherwise noted in the body of the source file(s), the following copyright notices will apply to the contents of the newlib subdirectory:

著作権など(5)

(1) Red Hat Incorporated

Copyright (c) 1994-2009 Red Hat, Inc. All rights reserved.

This copyrighted material is made available to anyone wishing to use, modify, copy, or redistribute it subject to the terms and conditions of the BSD License. This program is distributed in the hope that it will be useful, but WITHOUT ANY WARRANTY expressed or implied, including the implied warranties of MERCHANTABILITY or FITNESS FOR A PARTICULAR PURPOSE. A copy of this license is available at <http://www.opensource.org/licenses>. Any Red Hat trademarks that are incorporated in the source code or documentation are not subject to the BSD License and may only be used or replicated with the express permission of Red Hat, Inc.

(2) University of California, Berkeley

Copyright (c) 1981-2000 The Regents of the University of California. All rights reserved.

Redistribution and use in source and binary forms, with or without modification, are permitted provided that the following conditions are met:

- * Redistributions of source code must retain the above copyright notice, this list of conditions and the following disclaimer.
- * Redistributions in binary form must reproduce the above copyright notice, this list of conditions and the following disclaimer in the documentation and/or other materials provided with the distribution.
- * Neither the name of the University nor the names of its contributors may be used to endorse or promote products derived from this software without specific prior written permission.

THIS SOFTWARE IS PROVIDED BY THE COPYRIGHT HOLDERS AND CONTRIBUTORS "AS IS" AND ANY EXPRESS OR IMPLIED WARRANTIES, INCLUDING, BUT NOT LIMITED TO, THE IMPLIED WARRANTIES OF MERCHANTABILITY AND FITNESS FOR A PARTICULAR PURPOSE ARE DISCLAIMED. IN NO EVENT SHALL THE COPYRIGHT OWNER OR CONTRIBUTORS BE LIABLE FOR ANY DIRECT, INDIRECT, INCIDENTAL, SPECIAL, EXEMPLARY, OR CONSEQUENTIAL DAMAGES (INCLUDING, BUT NOT LIMITED TO, PROCUREMENT OF SUBSTITUTE GOODS OR SERVICES; LOSS OF USE, DATA, OR PROFITS; OR BUSINESS INTERRUPTION) HOWEVER CAUSED AND ON ANY THEORY OF LIABILITY, WHETHER IN CONTRACT, STRICT LIABILITY, OR TORT (INCLUDING NEGLIGENCE OR OTHERWISE) ARISING IN ANY WAY OUT OF THE USE OF THIS SOFTWARE, EVEN IF ADVISED OF THE POSSIBILITY OF SUCH DAMAGE.

(3) David M. Gay (AT&T 1991, Lucent 1998)

The author of this software is David M. Gay.

Copyright (c) 1991 by AT&T.

Permission to use, copy, modify, and distribute this software for any purpose without fee is hereby granted, provided that this entire notice is included in all copies of any software which is or includes a copy or modification of this software and in all copies of the supporting documentation for such software.

THIS SOFTWARE IS BEING PROVIDED "AS IS", WITHOUT ANY EXPRESS OR IMPLIED WARRANTY. IN PARTICULAR, NEITHER THE AUTHOR NOR AT&T MAKES ANY REPRESENTATION OR WARRANTY OF ANY KIND CONCERNING THE MERCHANTABILITY OF THIS SOFTWARE OR ITS FITNESS FOR ANY PARTICULAR PURPOSE.

The author of this software is David M. Gay.

Copyright (C) 1998-2001 by Lucent Technologies
All Rights Reserved

Permission to use, copy, modify, and distribute this software and its documentation for any purpose and without fee is hereby granted, provided that the above copyright notice appear in all copies and that both that the copyright notice and this permission notice and warranty disclaimer appear in supporting documentation, and that the name of Lucent or any of its entities not be used in advertising or publicity pertaining to distribution of the software without specific, written prior permission.

LUCENT DISCLAIMS ALL WARRANTIES WITH REGARD TO THIS SOFTWARE, INCLUDING ALL IMPLIED WARRANTIES OF MERCHANTABILITY AND FITNESS. IN NO EVENT SHALL LUCENT OR ANY OF ITS ENTITIES BE LIABLE FOR ANY SPECIAL, INDIRECT OR CONSEQUENTIAL DAMAGES OR ANY DAMAGES WHATSOEVER RESULTING FROM LOSS OF USE, DATA OR PROFITS, WHETHER IN AN ACTION OF CONTRACT, NEGLIGENCE OR OTHER TORTIOUS ACTION, ARISING OUT OF OR IN CONNECTION WITH THE USE OR PERFORMANCE OF THIS SOFTWARE.

(4) Advanced Micro Devices

Copyright 1989, 1990 Advanced Micro Devices, Inc.

This software is the property of Advanced Micro Devices, Inc (AMD) which specifically grants the user the right to modify, use and distribute this software provided this notice is not removed or altered. All other rights are reserved by AMD.

AMD MAKES NO WARRANTY OF ANY KIND, EXPRESS OR IMPLIED, WITH REGARD TO THIS SOFTWARE. IN NO EVENT SHALL AMD BE LIABLE FOR INCIDENTAL OR CONSEQUENTIAL DAMAGES IN CONNECTION WITH OR ARISING FROM THE FURNISHING, PERFORMANCE, OR USE OF THIS SOFTWARE.

So that all may benefit from your experience, please report any problems or suggestions about this software to the 29K Technical Support Center at 800-29-29-AMD (800-292-9263) in the USA, or 0800-89-1131 in the UK, or 0031-11-1129 in Japan, toll free. The direct dial number is 512-462-4118.

Advanced Micro Devices, Inc.
29K Support Products
Mail Stop 573
5900 E. Ben White Blvd.
Austin, TX 78741
800-292-9263

(7) Sun Microsystems

Copyright (C) 1993 by Sun Microsystems, Inc. All rights reserved.

Developed at SunPro, a Sun Microsystems, Inc. business. Permission to use, copy, modify, and distribute this software is freely granted, provided that this notice is preserved.

(8) Hewlett Packard

(c) Copyright 1986 HEWLETT-PACKARD COMPANY

To anyone who acknowledges that this file is provided "AS IS" without any express or implied warranty:
permission to use, copy, modify, and distribute this file for any purpose is hereby granted without fee, provided that the above copyright notice and this notice appears in all copies, and that the name of Hewlett-Packard Company not be used in advertising or publicity pertaining to distribution of the software without specific, written prior permission. Hewlett-Packard Company makes no representations about the suitability of this software for any purpose.

著作権など(6)

(9) Hans-Peter Nilsson

Copyright (C) 2001 Hans-Peter Nilsson

Permission to use, copy, modify, and distribute this software is freely granted, provided that the above copyright notice, this notice and the following disclaimer are preserved with no changes.

THIS SOFTWARE IS PROVIDED "AS IS" AND WITHOUT ANY EXPRESS OR IMPLIED WARRANTIES, INCLUDING, WITHOUT LIMITATION, THE IMPLIED WARRANTIES OF MERCHANTABILITY AND FITNESS FOR A PARTICULAR PURPOSE.

(11) Christopher G. Demetriou

Copyright (c) 2001 Christopher G. Demetriou
All rights reserved.

Redistribution and use in source and binary forms, with or without modification, are permitted provided that the following conditions are met:

1. Redistributions of source code must retain the above copyright notice, this list of conditions and the following disclaimer.
2. Redistributions in binary form must reproduce the above copyright notice, this list of conditions and the following disclaimer in the documentation and/or other materials provided with the distribution.
3. The name of the author may not be used to endorse or promote products derived from this software without specific prior written permission.

THIS SOFTWARE IS PROVIDED BY THE AUTHOR "AS IS" AND ANY EXPRESS OR IMPLIED WARRANTIES, INCLUDING, BUT NOT LIMITED TO, THE IMPLIED WARRANTIES OF MERCHANTABILITY AND FITNESS FOR A PARTICULAR PURPOSE ARE DISCLAIMED. IN NO EVENT SHALL THE AUTHOR BE LIABLE FOR ANY DIRECT, INDIRECT, INCIDENTAL, SPECIAL, EXEMPLARY, OR CONSEQUENTIAL DAMAGES (INCLUDING, BUT NOT LIMITED TO, PROCUREMENT OF SUBSTITUTE GOODS OR SERVICES; LOSS OF USE, DATA, OR PROFITS; OR BUSINESS INTERRUPTION) HOWEVER CAUSED AND ON ANY THEORY OF LIABILITY, WHETHER IN CONTRACT, STRICT LIABILITY, OR TORT (INCLUDING NEGLIGENCE OR OTHERWISE) ARISING IN ANY WAY OUT OF THE USE OF THIS SOFTWARE, EVEN IF ADVISED OF THE POSSIBILITY OF SUCH DAMAGE.

(12) SuperH, Inc.

Copyright 2002 SuperH, Inc. All rights reserved

This software is the property of SuperH, Inc (SuperH) which specifically grants the user the right to modify, use and distribute this software provided this notice is not removed or altered. All other rights are reserved by SuperH.

SUPERH MAKES NO WARRANTY OF ANY KIND, EXPRESS OR IMPLIED, WITH REGARD TO THIS SOFTWARE. IN NO EVENT SHALL SUPERH BE LIABLE FOR INDIRECT, SPECIAL, INCIDENTAL OR CONSEQUENTIAL DAMAGES IN CONNECTION WITH OR ARISING FROM THE FURNISHING, PERFORMANCE, OR USE OF THIS SOFTWARE.

So that all may benefit from your experience, please report any problems or suggestions about this software to the SuperH Support Center via e-mail at softwaresupport@superh.com.

SuperH, Inc.
405 River Oaks Parkway
San Jose
CA 95134
USA

(13) Royal Institute of Technology

Copyright (c) 1999 Kungliga Tekniska Högskolan

(Royal Institute of Technology, Stockholm, Sweden).
All rights reserved.

Redistribution and use in source and binary forms, with or without modification, are permitted provided that the following conditions are met:

1. Redistributions of source code must retain the above copyright notice, this list of conditions and the following disclaimer.
2. Redistributions in binary form must reproduce the above copyright notice, this list of conditions and the following disclaimer in the documentation and/or other materials provided with the distribution.
3. Neither the name of KTH nor the names of its contributors may be used to endorse or promote products derived from this software without specific prior written permission.

THIS SOFTWARE IS PROVIDED BY KTH AND ITS CONTRIBUTORS "AS IS" AND ANY EXPRESS OR IMPLIED WARRANTIES, INCLUDING, BUT NOT LIMITED TO, THE IMPLIED WARRANTIES OF MERCHANTABILITY AND FITNESS FOR A PARTICULAR PURPOSE ARE DISCLAIMED. IN NO EVENT SHALL KTH OR ITS CONTRIBUTORS BE LIABLE FOR ANY DIRECT, INDIRECT, INCIDENTAL, SPECIAL, EXEMPLARY, OR CONSEQUENTIAL DAMAGES (INCLUDING, BUT NOT LIMITED TO, PROCUREMENT OF SUBSTITUTE GOODS OR SERVICES; LOSS OF USE, DATA, OR PROFITS; OR BUSINESS INTERRUPTION) HOWEVER CAUSED AND ON ANY THEORY OF LIABILITY, WHETHER IN CONTRACT, STRICT LIABILITY, OR TORT (INCLUDING NEGLIGENCE OR OTHERWISE) ARISING IN ANY WAY OUT OF THE USE OF THIS SOFTWARE, EVEN IF ADVISED OF THE POSSIBILITY OF SUCH DAMAGE.

(14) Alexey Zelkin

Copyright (c) 2000, 2001 Alexey Zelkin <phantom@FreeBSD.org>
All rights reserved.

Redistribution and use in source and binary forms, with or without modification, are permitted provided that the following conditions are met:

1. Redistributions of source code must retain the above copyright notice, this list of conditions and the following disclaimer.
2. Redistributions in binary form must reproduce the above copyright notice, this list of conditions and the following disclaimer in the documentation and/or other materials provided with the distribution.

THIS SOFTWARE IS PROVIDED BY THE AUTHOR AND CONTRIBUTORS "AS IS" AND ANY EXPRESS OR IMPLIED WARRANTIES, INCLUDING, BUT NOT LIMITED TO, THE IMPLIED WARRANTIES OF MERCHANTABILITY AND FITNESS FOR A PARTICULAR PURPOSE ARE DISCLAIMED. IN NO EVENT SHALL THE AUTHOR OR CONTRIBUTORS BE LIABLE FOR ANY DIRECT, INDIRECT, INCIDENTAL, SPECIAL, EXEMPLARY, OR CONSEQUENTIAL DAMAGES (INCLUDING, BUT NOT LIMITED TO, PROCUREMENT OF SUBSTITUTE GOODS OR SERVICES; LOSS OF USE, DATA, OR PROFITS; OR BUSINESS INTERRUPTION) HOWEVER CAUSED AND ON ANY THEORY OF LIABILITY, WHETHER IN CONTRACT, STRICT LIABILITY, OR TORT (INCLUDING NEGLIGENCE OR OTHERWISE) ARISING IN ANY WAY OUT OF THE USE OF THIS SOFTWARE, EVEN IF ADVISED OF THE POSSIBILITY OF SUCH DAMAGE.

(15) Andrey A. Chernov

Copyright (C) 1997 by Andrey A. Chernov, Moscow, Russia.
All rights reserved.

Redistribution and use in source and binary forms, with or without modification, are permitted provided that the following conditions are met:

1. Redistributions of source code must retain the above copyright notice, this list of conditions and the following disclaimer.
2. Redistributions in binary form must reproduce the above copyright

著作権など(7)

notice, this list of conditions and the following disclaimer in the documentation and/or other materials provided with the distribution.

THIS SOFTWARE IS PROVIDED BY THE AUTHOR "AS IS" AND ANY EXPRESS OR IMPLIED WARRANTIES, INCLUDING, BUT NOT LIMITED TO, THE IMPLIED WARRANTIES OF MERCHANTABILITY AND FITNESS FOR A PARTICULAR PURPOSE ARE DISCLAIMED. IN NO EVENT SHALL THE REGENTS OR CONTRIBUTORS BE LIABLE FOR ANY DIRECT, INDIRECT, INCIDENTAL, SPECIAL, EXEMPLARY, OR CONSEQUENTIAL DAMAGES (INCLUDING, BUT NOT LIMITED TO, PROCUREMENT OF SUBSTITUTE GOODS OR SERVICES; LOSS OF USE, DATA, OR PROFITS; OR BUSINESS INTERRUPTION) HOWEVER CAUSED AND ON ANY THEORY OF LIABILITY, WHETHER IN CONTRACT, STRICT LIABILITY, OR TORT (INCLUDING NEGLIGENCE OR OTHERWISE) ARISING IN ANY WAY OUT OF THE USE OF THIS SOFTWARE, EVEN IF ADVISED OF THE POSSIBILITY OF SUCH DAMAGE.

(16) FreeBSD

Copyright (c) 1997-2002 FreeBSD Project.
All rights reserved.

Redistribution and use in source and binary forms, with or without modification, are permitted provided that the following conditions are met:

1. Redistributions of source code must retain the above copyright notice, this list of conditions and the following disclaimer.
2. Redistributions in binary form must reproduce the above copyright notice, this list of conditions and the following disclaimer in the documentation and/or other materials provided with the distribution.

THIS SOFTWARE IS PROVIDED BY THE AUTHOR AND CONTRIBUTORS "AS IS" AND ANY EXPRESS OR IMPLIED WARRANTIES, INCLUDING, BUT NOT LIMITED TO, THE IMPLIED WARRANTIES OF MERCHANTABILITY AND FITNESS FOR A PARTICULAR PURPOSE ARE DISCLAIMED. IN NO EVENT SHALL THE AUTHOR OR CONTRIBUTORS BE LIABLE FOR ANY DIRECT, INDIRECT, INCIDENTAL, SPECIAL, EXEMPLARY, OR CONSEQUENTIAL DAMAGES (INCLUDING, BUT NOT LIMITED TO, PROCUREMENT OF SUBSTITUTE GOODS OR SERVICES; LOSS OF USE, DATA, OR PROFITS; OR BUSINESS INTERRUPTION) HOWEVER CAUSED AND ON ANY THEORY OF LIABILITY, WHETHER IN CONTRACT, STRICT LIABILITY, OR TORT (INCLUDING NEGLIGENCE OR OTHERWISE) ARISING IN ANY WAY OUT OF THE USE OF THIS SOFTWARE, EVEN IF ADVISED OF THE POSSIBILITY OF SUCH DAMAGE.

(17) S. L. Moshier

Author: S. L. Moshier.

Copyright (c) 1984,2000 S.L. Moshier

Permission to use, copy, modify, and distribute this software for any purpose without fee is hereby granted, provided that this entire notice is included in all copies of any software which is or includes a copy or modification of this software and in all copies of the supporting documentation for such software.

THIS SOFTWARE IS BEING PROVIDED "AS IS", WITHOUT ANY EXPRESS OR IMPLIED WARRANTY. IN PARTICULAR, THE AUTHOR MAKES NO REPRESENTATION OR WARRANTY OF ANY KIND CONCERNING THE MERCHANTABILITY OF THIS SOFTWARE OR ITS FITNESS FOR ANY PARTICULAR PURPOSE.

(18) Citrus Project

Copyright (c)1999 Citrus Project,
All rights reserved.

Redistribution and use in source and binary forms, with or without modification, are permitted provided that the following conditions are met:

1. Redistributions of source code must retain the above copyright notice, this list of conditions and the following disclaimer.
2. Redistributions in binary form must reproduce the above copyright notice, this list of conditions and the following disclaimer in the documentation and/or other materials provided with the distribution.

THIS SOFTWARE IS PROVIDED BY THE AUTHOR AND CONTRIBUTORS "AS IS" AND ANY EXPRESS OR IMPLIED WARRANTIES, INCLUDING, BUT NOT LIMITED TO, THE IMPLIED WARRANTIES OF MERCHANTABILITY AND FITNESS FOR A PARTICULAR PURPOSE ARE DISCLAIMED. IN NO EVENT SHALL THE AUTHOR OR CONTRIBUTORS BE LIABLE FOR ANY DIRECT, INDIRECT, INCIDENTAL, SPECIAL, EXEMPLARY, OR CONSEQUENTIAL DAMAGES (INCLUDING, BUT NOT LIMITED TO, PROCUREMENT OF SUBSTITUTE GOODS OR SERVICES; LOSS OF USE, DATA, OR PROFITS; OR BUSINESS INTERRUPTION) HOWEVER CAUSED AND ON ANY THEORY OF LIABILITY, WHETHER IN CONTRACT, STRICT LIABILITY, OR TORT (INCLUDING NEGLIGENCE OR OTHERWISE) ARISING IN ANY WAY OUT OF THE USE OF THIS SOFTWARE, EVEN IF ADVISED OF THE POSSIBILITY OF SUCH DAMAGE.

(19) Todd C. Miller

Copyright (c) 1998 Todd C. Miller <Todd.Miller@courtesan.com>
All rights reserved.

Redistribution and use in source and binary forms, with or without modification, are permitted provided that the following conditions are met:

1. Redistributions of source code must retain the above copyright notice, this list of conditions and the following disclaimer.
2. Redistributions in binary form must reproduce the above copyright notice, this list of conditions and the following disclaimer in the documentation and/or other materials provided with the distribution.
3. The name of the author may not be used to endorse or promote products derived from this software without specific prior written permission.

THIS SOFTWARE IS PROVIDED "AS IS" AND ANY EXPRESS OR IMPLIED WARRANTIES, INCLUDING, BUT NOT LIMITED TO, THE IMPLIED WARRANTIES OF MERCHANTABILITY AND FITNESS FOR A PARTICULAR PURPOSE ARE DISCLAIMED. IN NO EVENT SHALL THE AUTHOR BE LIABLE FOR ANY DIRECT, INDIRECT, INCIDENTAL, SPECIAL, EXEMPLARY, OR CONSEQUENTIAL DAMAGES (INCLUDING, BUT NOT LIMITED TO, PROCUREMENT OF SUBSTITUTE GOODS OR SERVICES; LOSS OF USE, DATA, OR PROFITS; OR BUSINESS INTERRUPTION) HOWEVER CAUSED AND ON ANY THEORY OF LIABILITY, WHETHER IN CONTRACT, STRICT LIABILITY, OR TORT (INCLUDING NEGLIGENCE OR OTHERWISE) ARISING IN ANY WAY OUT OF THE USE OF THIS SOFTWARE, EVEN IF ADVISED OF THE POSSIBILITY OF SUCH DAMAGE.

(20) DJ Delorie (#386)

Copyright (C) 1991 DJ Delorie
All rights reserved.

Redistribution, modification, and use in source and binary forms is permitted provided that the above copyright notice and following paragraph are duplicated in all such forms.

This file is distributed WITHOUT ANY WARRANTY; without even the implied warranty of MERCHANTABILITY or FITNESS FOR A PARTICULAR PURPOSE.

(23) Intel (#960)

Copyright (c) 1993 Intel Corporation

Intel hereby grants you permission to copy, modify, and distribute this software and its documentation. Intel grants this permission provided that the above copyright notice appears in all copies and that both the copyright notice and this permission notice appear in supporting

著作権など(8)

documentation. In addition, Intel grants this permission provided that you prominently mark as "not part of the original" any modifications made to this software or documentation, and that the name of Intel Corporation not be used in advertising or publicity pertaining to distribution of the software or the documentation without specific, written prior permission.

Intel Corporation provides this AS IS, WITHOUT ANY WARRANTY, EXPRESS OR IMPLIED, INCLUDING, WITHOUT LIMITATION, ANY WARRANTY OF MERCHANTABILITY OR FITNESS FOR A PARTICULAR PURPOSE. Intel makes no guarantee or representations regarding the use of, or the results of the use of, the software and documentation in terms of correctness, accuracy, reliability, currentness, or otherwise; and you rely on the software, documentation and results solely at your own risk.

IN NO EVENT SHALL INTEL BE LIABLE FOR ANY LOSS OF USE, LOSS OF BUSINESS, LOSS OF PROFITS, INDIRECT, INCIDENTAL, SPECIAL OR CONSEQUENTIAL DAMAGES OF ANY KIND. IN NO EVENT SHALL INTEL'S TOTAL LIABILITY EXCEED THE SUM PAID TO INTEL FOR THE PRODUCT LICENSED HEREUNDER.

(26) Mike Barcroft

Copyright (c) 2001 Mike Barcroft <mike@FreeBSD.org>
All rights reserved.

Redistribution and use in source and binary forms, with or without modification, are permitted provided that the following conditions are met:

1. Redistributions of source code must retain the above copyright notice, this list of conditions and the following disclaimer.
2. Redistributions in binary form must reproduce the above copyright notice, this list of conditions and the following disclaimer in the documentation and/or other materials provided with the distribution.

THIS SOFTWARE IS PROVIDED BY THE AUTHOR AND CONTRIBUTORS ``AS IS'' AND ANY EXPRESS OR IMPLIED WARRANTIES, INCLUDING, BUT NOT LIMITED TO, THE IMPLIED WARRANTIES OF MERCHANTABILITY AND FITNESS FOR A PARTICULAR PURPOSE ARE DISCLAIMED. IN NO EVENT SHALL THE AUTHOR OR CONTRIBUTORS BE LIABLE FOR ANY DIRECT, INDIRECT, INCIDENTAL, SPECIAL, EXEMPLARY, OR CONSEQUENTIAL DAMAGES (INCLUDING, BUT NOT LIMITED TO, PROCUREMENT OF SUBSTITUTE GOODS OR SERVICES; LOSS OF USE, DATA, OR PROFITS; OR BUSINESS INTERRUPTION) HOWEVER CAUSED AND ON ANY THEORY OF LIABILITY, WHETHER IN CONTRACT, STRICT LIABILITY, OR TORT (INCLUDING NEGLIGENCE OR OTHERWISE) ARISING IN ANY WAY OUT OF THE USE OF THIS SOFTWARE, EVEN IF ADVISED OF THE POSSIBILITY OF SUCH DAMAGE.

(27) Konstantin Chuguev (--enable-newlib-iconv)

Copyright (c) 1999, 2000
Konstantin Chuguev. All rights reserved.

Redistribution and use in source and binary forms, with or without modification, are permitted provided that the following conditions are met:

1. Redistributions of source code must retain the above copyright notice, this list of conditions and the following disclaimer.
2. Redistributions in binary form must reproduce the above copyright notice, this list of conditions and the following disclaimer in the documentation and/or other materials provided with the distribution.

THIS SOFTWARE IS PROVIDED BY THE AUTHOR AND CONTRIBUTORS ``AS IS'' AND ANY EXPRESS OR IMPLIED WARRANTIES, INCLUDING, BUT NOT LIMITED TO, THE IMPLIED WARRANTIES OF MERCHANTABILITY AND FITNESS FOR A PARTICULAR PURPOSE ARE DISCLAIMED. IN NO EVENT SHALL THE AUTHOR OR CONTRIBUTORS BE LIABLE FOR ANY DIRECT, INDIRECT, INCIDENTAL, SPECIAL, EXEMPLARY, OR CONSEQUENTIAL DAMAGES (INCLUDING, BUT NOT LIMITED

TO, PROCUREMENT OF SUBSTITUTE GOODS OR SERVICES; LOSS OF USE, DATA, OR PROFITS; OR BUSINESS INTERRUPTION) HOWEVER CAUSED AND ON ANY THEORY OF LIABILITY, WHETHER IN CONTRACT, STRICT LIABILITY, OR TORT (INCLUDING NEGLIGENCE OR OTHERWISE) ARISING IN ANY WAY OUT OF THE USE OF THIS SOFTWARE, EVEN IF ADVISED OF THE POSSIBILITY OF SUCH DAMAGE.

iconv (Charset Conversion Library) v2.0

(28) Artem Bityuckiy (--enable-newlib-iconv)

Copyright (c) 2003, Artem B. Bityuckiy, SoftMine Corporation.
Rights transferred to Franklin Electronic Publishers.

Redistribution and use in source and binary forms, with or without modification, are permitted provided that the following conditions are met:

1. Redistributions of source code must retain the above copyright notice, this list of conditions and the following disclaimer.
2. Redistributions in binary form must reproduce the above copyright notice, this list of conditions and the following disclaimer in the documentation and/or other materials provided with the distribution.

THIS SOFTWARE IS PROVIDED BY THE AUTHOR AND CONTRIBUTORS ``AS IS'' AND ANY EXPRESS OR IMPLIED WARRANTIES, INCLUDING, BUT NOT LIMITED TO, THE IMPLIED WARRANTIES OF MERCHANTABILITY AND FITNESS FOR A PARTICULAR PURPOSE ARE DISCLAIMED. IN NO EVENT SHALL THE AUTHOR OR CONTRIBUTORS BE LIABLE FOR ANY DIRECT, INDIRECT, INCIDENTAL, SPECIAL, EXEMPLARY, OR CONSEQUENTIAL DAMAGES (INCLUDING, BUT NOT LIMITED TO, PROCUREMENT OF SUBSTITUTE GOODS OR SERVICES; LOSS OF USE, DATA, OR PROFITS; OR BUSINESS INTERRUPTION) HOWEVER CAUSED AND ON ANY THEORY OF LIABILITY, WHETHER IN CONTRACT, STRICT LIABILITY, OR TORT (INCLUDING NEGLIGENCE OR OTHERWISE) ARISING IN ANY WAY OUT OF THE USE OF THIS SOFTWARE, EVEN IF ADVISED OF THE POSSIBILITY OF SUCH DAMAGE.

(30) - Alex Tatmanjants (targets using libc/posix)

Copyright (c) 1995 Alex Tatmanjants <alex@elvisti.kiev.ua>
at Electronni Visti IA, Kiev, Ukraine.
All rights reserved.

Redistribution and use in source and binary forms, with or without modification, are permitted provided that the following conditions are met:

1. Redistributions of source code must retain the above copyright notice, this list of conditions and the following disclaimer.
2. Redistributions in binary form must reproduce the above copyright notice, this list of conditions and the following disclaimer in the documentation and/or other materials provided with the distribution.

THIS SOFTWARE IS PROVIDED BY THE AUTHOR ``AS IS'' AND ANY EXPRESS OR IMPLIED WARRANTIES, INCLUDING, BUT NOT LIMITED TO, THE IMPLIED WARRANTIES OF MERCHANTABILITY AND FITNESS FOR A PARTICULAR PURPOSE ARE DISCLAIMED. IN NO EVENT SHALL THE AUTHOR BE LIABLE FOR ANY DIRECT, INDIRECT, INCIDENTAL, SPECIAL, EXEMPLARY, OR CONSEQUENTIAL DAMAGES (INCLUDING, BUT NOT LIMITED TO, PROCUREMENT OF SUBSTITUTE GOODS OR SERVICES; LOSS OF USE, DATA, OR PROFITS; OR BUSINESS INTERRUPTION) HOWEVER CAUSED AND ON ANY THEORY OF LIABILITY, WHETHER IN CONTRACT, STRICT LIABILITY, OR TORT (INCLUDING NEGLIGENCE OR OTHERWISE) ARISING IN ANY WAY OUT OF THE USE OF THIS SOFTWARE, EVEN IF ADVISED OF THE POSSIBILITY OF SUCH DAMAGE.

(31) - M. Warner Losh (targets using libc/posix)

Copyright (c) 1998, M. Warner Losh <imp@freebsd.org>

著作権など(9)

All rights reserved.

Redistribution and use in source and binary forms, with or without modification, are permitted provided that the following conditions are met:

1. Redistributions of source code must retain the above copyright notice, this list of conditions and the following disclaimer.
2. Redistributions in binary form must reproduce the above copyright notice, this list of conditions and the following disclaimer in the documentation and/or other materials provided with the distribution.

THIS SOFTWARE IS PROVIDED BY THE AUTHOR AND CONTRIBUTORS "AS IS" AND ANY EXPRESS OR IMPLIED WARRANTIES, INCLUDING, BUT NOT LIMITED TO, THE IMPLIED WARRANTIES OF MERCHANTABILITY AND FITNESS FOR A PARTICULAR PURPOSE ARE DISCLAIMED. IN NO EVENT SHALL THE AUTHOR OR CONTRIBUTORS BE LIABLE FOR ANY DIRECT, INDIRECT, INCIDENTAL, SPECIAL, EXEMPLARY, OR CONSEQUENTIAL DAMAGES (INCLUDING, BUT NOT LIMITED TO, PROCUREMENT OF SUBSTITUTE GOODS OR SERVICES; LOSS OF USE, DATA, OR PROFITS; OR BUSINESS INTERRUPTION) HOWEVER CAUSED AND ON ANY THEORY OF LIABILITY, WHETHER IN CONTRACT, STRICT LIABILITY, OR TORT (INCLUDING NEGLIGENCE OR OTHERWISE) ARISING IN ANY WAY OUT OF THE USE OF THIS SOFTWARE, EVEN IF ADVISED OF THE POSSIBILITY OF SUCH DAMAGE.

(32) - Andrey A. Chernov (targets using libc/posix)

Copyright (C) 1996 by Andrey A. Chernov, Moscow, Russia.
All rights reserved.

Redistribution and use in source and binary forms, with or without modification, are permitted provided that the following conditions are met:

1. Redistributions of source code must retain the above copyright notice, this list of conditions and the following disclaimer.
2. Redistributions in binary form must reproduce the above copyright notice, this list of conditions and the following disclaimer in the documentation and/or other materials provided with the distribution.

THIS SOFTWARE IS PROVIDED BY THE AUTHOR "AS IS" AND ANY EXPRESS OR IMPLIED WARRANTIES, INCLUDING, BUT NOT LIMITED TO, THE IMPLIED WARRANTIES OF MERCHANTABILITY AND FITNESS FOR A PARTICULAR PURPOSE ARE DISCLAIMED. IN NO EVENT SHALL THE REGENTS OR CONTRIBUTORS BE LIABLE FOR ANY DIRECT, INDIRECT, INCIDENTAL, SPECIAL, EXEMPLARY, OR CONSEQUENTIAL DAMAGES (INCLUDING, BUT NOT LIMITED TO, PROCUREMENT OF SUBSTITUTE GOODS OR SERVICES; LOSS OF USE, DATA, OR PROFITS; OR BUSINESS INTERRUPTION) HOWEVER CAUSED AND ON ANY THEORY OF LIABILITY, WHETHER IN CONTRACT, STRICT LIABILITY, OR TORT (INCLUDING NEGLIGENCE OR OTHERWISE) ARISING IN ANY WAY OUT OF THE USE OF THIS SOFTWARE, EVEN IF ADVISED OF THE POSSIBILITY OF SUCH DAMAGE.

(33) - Daniel Eischen (targets using libc/posix)

Copyright (c) 2001 Daniel Eischen <deischen@FreeBSD.org>.
All rights reserved.

Redistribution and use in source and binary forms, with or without modification, are permitted provided that the following conditions are met:

1. Redistributions of source code must retain the above copyright notice, this list of conditions and the following disclaimer.
2. Redistributions in binary form must reproduce the above copyright notice, this list of conditions and the following disclaimer in the documentation and/or other materials provided with the distribution.

THIS SOFTWARE IS PROVIDED BY THE AUTHOR AND

CONTRIBUTORS "AS IS" AND ANY EXPRESS OR IMPLIED WARRANTIES, INCLUDING, BUT NOT LIMITED TO, THE IMPLIED WARRANTIES OF MERCHANTABILITY AND FITNESS FOR A PARTICULAR PURPOSE ARE DISCLAIMED. IN NO EVENT SHALL THE REGENTS OR CONTRIBUTORS BE LIABLE FOR ANY DIRECT, INDIRECT, INCIDENTAL, SPECIAL, EXEMPLARY, OR CONSEQUENTIAL DAMAGES (INCLUDING, BUT NOT LIMITED TO, PROCUREMENT OF SUBSTITUTE GOODS OR SERVICES; LOSS OF USE, DATA, OR PROFITS; OR BUSINESS INTERRUPTION) HOWEVER CAUSED AND ON ANY THEORY OF LIABILITY, WHETHER IN CONTRACT, STRICT LIABILITY, OR TORT (INCLUDING NEGLIGENCE OR OTHERWISE) ARISING IN ANY WAY OUT OF THE USE OF THIS SOFTWARE, EVEN IF ADVISED OF THE POSSIBILITY OF SUCH DAMAGE.

(35) - ARM Ltd (arm and thumb variant targets only)

Copyright (c) 2009-2015 ARM Ltd
All rights reserved.

Redistribution and use in source and binary forms, with or without modification, are permitted provided that the following conditions are met:

1. Redistributions of source code must retain the above copyright notice, this list of conditions and the following disclaimer.
2. Redistributions in binary form must reproduce the above copyright notice, this list of conditions and the following disclaimer in the documentation and/or other materials provided with the distribution.
3. The name of the company may not be used to endorse or promote products derived from this software without specific prior written permission.

THIS SOFTWARE IS PROVIDED BY ARM LTD "AS IS" AND ANY EXPRESS OR IMPLIED WARRANTIES, INCLUDING, BUT NOT LIMITED TO, THE IMPLIED WARRANTIES OF MERCHANTABILITY AND FITNESS FOR A PARTICULAR PURPOSE ARE DISCLAIMED. IN NO EVENT SHALL ARM LTD BE LIABLE FOR ANY DIRECT, INDIRECT, INCIDENTAL, SPECIAL, EXEMPLARY, OR CONSEQUENTIAL DAMAGES (INCLUDING, BUT NOT LIMITED TO, PROCUREMENT OF SUBSTITUTE GOODS OR SERVICES; LOSS OF USE, DATA, OR PROFITS; OR BUSINESS INTERRUPTION) HOWEVER CAUSED AND ON ANY THEORY OF LIABILITY, WHETHER IN CONTRACT, STRICT LIABILITY, OR TORT (INCLUDING NEGLIGENCE OR OTHERWISE) ARISING IN ANY WAY OUT OF THE USE OF THIS SOFTWARE, EVEN IF ADVISED OF THE POSSIBILITY OF SUCH DAMAGE.

(41) Ed Schouten - Free BSD

Copyright (c) 2008 Ed Schouten <ed@FreeBSD.org>
All rights reserved.

Redistribution and use in source and binary forms, with or without modification, are permitted provided that the following conditions are met:

1. Redistributions of source code must retain the above copyright notice, this list of conditions and the following disclaimer.
2. Redistributions in binary form must reproduce the above copyright notice, this list of conditions and the following disclaimer in the documentation and/or other materials provided with the distribution.

THIS SOFTWARE IS PROVIDED BY THE AUTHOR AND CONTRIBUTORS "AS IS" AND ANY EXPRESS OR IMPLIED WARRANTIES, INCLUDING, BUT NOT LIMITED TO, THE IMPLIED WARRANTIES OF MERCHANTABILITY AND FITNESS FOR A PARTICULAR PURPOSE ARE DISCLAIMED. IN NO EVENT SHALL THE AUTHOR OR CONTRIBUTORS BE LIABLE FOR ANY DIRECT, INDIRECT, INCIDENTAL, SPECIAL, EXEMPLARY, OR CONSEQUENTIAL DAMAGES (INCLUDING, BUT NOT LIMITED TO, PROCUREMENT OF SUBSTITUTE GOODS OR SERVICES; LOSS OF USE, DATA, OR PROFITS; OR BUSINESS INTERRUPTION) HOWEVER CAUSED AND ON ANY THEORY OF LIABILITY, WHETHER IN CONTRACT, STRICT LIABILITY, OR TORT (INCLUDING NEGLIGENCE OR OTHERWISE) ARISING IN ANY WAY OUT OF THE

著作権など(10)

USE OF THIS SOFTWARE, EVEN IF ADVISED OF THE POSSIBILITY OF SUCH DAMAGE.

easy-ecc

Copyright (c) 2013, Kenneth MacKay
All rights reserved.

Redistribution and use in source and binary forms, with or without modification, are permitted provided that the following conditions are met:

- * Redistributions of source code must retain the above copyright notice, this list of conditions and the following disclaimer.
- * Redistributions in binary form must reproduce the above copyright notice, this list of conditions and the following disclaimer in the documentation and/or other materials provided with the distribution.

THIS SOFTWARE IS PROVIDED BY THE COPYRIGHT HOLDERS AND CONTRIBUTORS "AS IS" AND ANY EXPRESS OR IMPLIED WARRANTIES, INCLUDING, BUT NOT LIMITED TO, THE IMPLIED WARRANTIES OF MERCHANTABILITY AND FITNESS FOR A PARTICULAR PURPOSE ARE DISCLAIMED. IN NO EVENT SHALL THE COPYRIGHT HOLDER OR CONTRIBUTORS BE LIABLE FOR ANY DIRECT, INDIRECT, INCIDENTAL, SPECIAL, EXEMPLARY, OR CONSEQUENTIAL DAMAGES (INCLUDING, BUT NOT LIMITED TO, PROCUREMENT OF SUBSTITUTE GOODS OR SERVICES; LOSS OF USE, DATA, OR PROFITS; OR BUSINESS INTERRUPTION) HOWEVER CAUSED AND ON ANY THEORY OF LIABILITY, WHETHER IN CONTRACT, STRICT LIABILITY, OR TORT (INCLUDING NEGLIGENCE OR OTHERWISE) ARISING IN ANY WAY OUT OF THE USE OF THIS SOFTWARE, EVEN IF ADVISED OF THE POSSIBILITY OF SUCH DAMAGE.

● NA-LX129CL/NA-LX129CR

Copyright <2019> <STMicroelectronics>

Redistribution and use in source and binary forms, with or without modification, are permitted provided that the following conditions are met:

1. Redistributions of source code must retain the above copyright notice, this list of conditions and the following disclaimer.
2. Redistributions in binary form must reproduce the above copyright notice, this list of conditions and the following disclaimer in the documentation and/or other materials provided with the distribution.
3. Neither the name of the copyright holder nor the names of its contributors may be used to endorse or promote products derived from this software without specific prior written permission.

THIS SOFTWARE IS PROVIDED BY THE COPYRIGHT HOLDERS AND CONTRIBUTORS "AS IS" AND ANY EXPRESS OR IMPLIED WARRANTIES, INCLUDING, BUT NOT LIMITED TO, THE IMPLIED WARRANTIES OF MERCHANTABILITY AND FITNESS FOR A PARTICULAR PURPOSE ARE DISCLAIMED. IN NO EVENT SHALL THE COPYRIGHT HOLDER OR CONTRIBUTORS BE LIABLE FOR ANY DIRECT, INDIRECT, INCIDENTAL, SPECIAL, EXEMPLARY, OR CONSEQUENTIAL DAMAGES (INCLUDING, BUT NOT LIMITED TO, PROCUREMENT OF SUBSTITUTE GOODS OR SERVICES; LOSS OF USE, DATA, OR PROFITS; OR BUSINESS INTERRUPTION) HOWEVER CAUSED AND ON ANY THEORY OF LIABILITY, WHETHER IN CONTRACT, STRICT LIABILITY, OR TORT (INCLUDING NEGLIGENCE OR OTHERWISE) ARISING IN ANY WAY OUT OF THE USE OF THIS SOFTWARE, EVEN IF ADVISED OF THE POSSIBILITY OF SUCH DAMAGE.

アプリの初期設定に関するお問い合わせ

フリーダイヤル



パナは ハチサンニ

0120-878-832

受付時間

9:00 ~ 18:00 月~土曜日

(祝日・正月三が日を除く)

パナソニック株式会社 ランドリー・クリーナー事業部

〒525-8555 滋賀県草津市野路東2丁目3番1-2号

© Panasonic Corporation 2023

A0823-0

2023年8月発行(Ver.1.0)