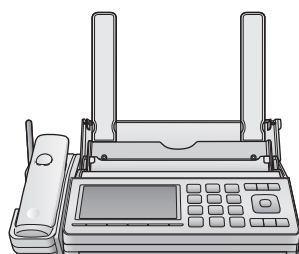


## Quick Reference Guide

Facsimile

Model No. **KX-PD102DL**  
**KX-PD102D**



Base unit  
(KX-PD102)  
Main cordless handset  
(KX-FKD353)



Personal cordless  
handset  
(KX-FKD506)

- KX-PD102DL includes 1 main cordless handset, 1 personal cordless handset and 1 base unit.
- KX-PD102D includes 1 main cordless handset and 1 base unit.

### Table of Contents

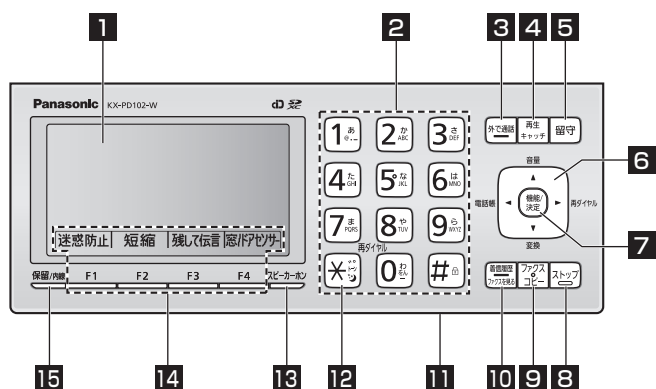
Parts Descriptions .....	2
Basic Operations .....	3

Thank you for purchasing a Panasonic product.

- This guide explains some basic features and operations, but not all of them. For further details, see the Japanese operating instructions.
- This product is designed for use in Japan.  
Panasonic cannot provide service for this product if used outside Japan.
- Any details given in this guide are subject to change without notice.

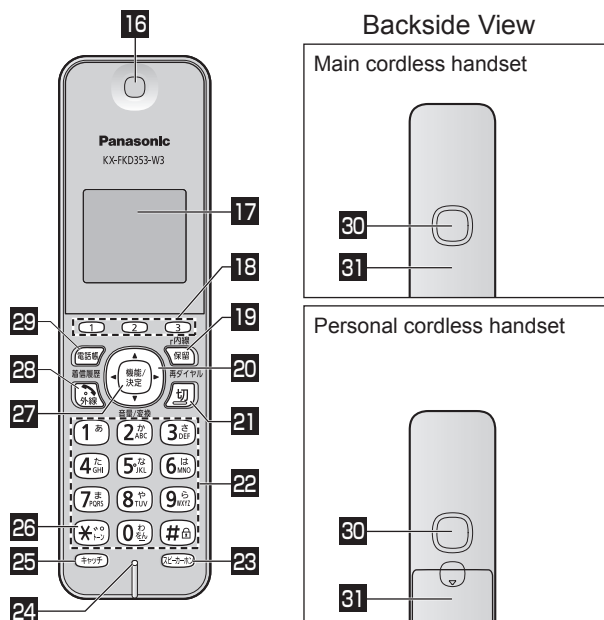
# Parts Descriptions

## Base unit



- 1 Liquid crystal display
- 2 Numeral/Character buttons
- 3 Call forward button & indicator
- 4 Playback/Flash button
- 5 Auto Answer button & indicator
- 6 Phone book button (電話帳)
- Redial button (再ダイヤル)
- Volume control button (音量)
- 7 Function/Set button
- 8 Stop button
- 9 Fax/Copy button
- 10 Caller ID Log/Fax Print button & indicator
- 11 Microphone (Front side)
- 12 Tone button (to switch to tone dialing)
- 13 Speakerphone button
- 14 Multi-operation buttons
- 15 Hold/Intercom button

## Main cordless handset/Personal cordless handset



- 16 Earpiece
- 17 Liquid crystal display
- 18 Multi-operation/One-touch Dial buttons
- 19 Hold/Intercom button
- 20 Caller ID button (着信履歴)
- Redial button (再ダイヤル)
- Volume control button (音量/変換)
- 21 Off button
- 22 Numeral/Character buttons
- 23 Speakerphone button
- 24 Microphone
- 25 Flash button
- 26 Tone button (to switch to tone dialing)
- 27 Function/Set button
- 28 Talk button
- 29 Phone book button
- 30 Speaker
- 31 Battery cover

## Basic Operations

- The number after the button shows the location of the button described in the previous page.
- Main cordless handset can be used in the distance like a personal cordless handset.
- Operate the base unit to use the main cordless handset.

### Base unit

#### ■ To make a call

Lift the main cordless handset. → Dial the phone number (2). → Talk. → To end the call, place the main cordless handset on the base unit or press 【切】 (Off: 21).

#### ■ To receive a call

When the phone rings, lift the main cordless handset. → Talk. → To end the call, place the main cordless handset on the base unit or press 【切】.

- When:
  - document reception is required,
  - a fax calling tone (slow beep) is heard, or
  - no sound is heard,press 【ファクス】 (Fax: 9).

#### ■ To place the current call on hold

Press 【保留】 (Hold: 19) during a call with the main cordless handset. (You can place the main cordless handset on the base unit.)

#### ■ To retrieve the held call

- If you have returned the main cordless handset on the base unit, lift the main cordless handset.
- If you have not returned the main cordless handset on the base unit, press 【保留】.

#### ■ To transfer the held call to the personal cordless handset

Press 【保留】 → # during a call. → Press 1 - 5 (Intercom No.). → Press 【切】 when the other party answers.

#### ■ To use TAM (Telephone Answering Machine)

When you leave home, press 【留守】 (Auto answer: 5) to turn on the indicator. (To deactivate, press 【留守】 again to turn off the indicator.)  
→ When receiving a call while TAM is activated, it answers the call automatically in Japanese, and records the incoming messages. Then, the 【留守】 indicator starts flashing.  
→ When you return home, press 【留守】 to play back the messages. The 【留守】 indicator turns off and the answering mode is deactivated. After playing back the messages, press 【はい】 (Yes: 14) twice to erase the messages or press 【いいえ】 (No: 14) to keep the messages.

To play back all messages while TAM is deactivated, press 【再生】 (Playback: 4) → 【▼】 【▲】 (6) to select “すべて再生” → 【決定】 (Set: 7).

After playing back the messages, press 【はい】 (Yes: 14) twice to erase the messages or press 【いいえ】 (No: 14) to keep the messages.

\*Up to 50 messages can be recorded for approx. 12 minutes in total.

#### ■ To hear recorded messages while away from home (Remote control)

##### Preparation before you leave home

Store a remote control number.

With the main cordless handset placed on the base unit, press 【機能】 (Function: 7) → # 0 0 6. → Enter the desired 4-digit number. → Press 【決定】, then press 【ストップ】 (Stop: 8).

When you leave home, press 【留守】 to turn on the indicator.

##### To hear messages

Dial your home phone number. → While the outgoing message is played back, enter your remote control number. → Announcement. → Press 4. → You will hear recorded messages if any.

##### NOTE

- This operation can be made only from a touch-tone phone.

### Personal cordless handset (KX-PD102DL only)

#### ■ To make a call

Lift the personal cordless handset from the charger and press 【外線】 (Talk: 28). → Dial the phone number (22). → Talk. → To end the call, place the personal cordless handset on the charger or press 【切】.

#### ■ To receive a call

When the phone rings, lift the personal cordless handset from the charger and press 【外線】.  
→ Talk. → To end the call, place the personal cordless handset on the charger or press 【切】.

- When:
  - document reception is required,
  - a fax calling tone (slow beep) is heard, or
  - no sound is heard,press 【機能】 (Function: 27) → 【▼】 【▲】 (20) to select “ファクス受信” → 【決定】 (Set: 27) → 【はい】 (Yes: 18).

■ **To make a call using the speakerphone (Hands-free talk)**

Press **【スピーカーホン】** (Speakerphone: **23**).

→ Dial the phone number. → Talk to the microphone (**24**). → To end the call, place the personal cordless handset on the charger or press **【切】**.

- Speak clearly about 50 cm away from the microphone.
- Speak alternately with the other party. The sound may cut in and out if you both speak at the same time.

■ **To receive a call with the speakerphone (Hands-free talk)**

When the phone rings, press **【スピーカーホン】**.

→ Talk to the microphone. → To end the call, place the personal cordless handset on the charger or press **【切】**.

■ **To place the current call on hold**

Press **【保留】** (Hold: **19**) during a call.

■ **To retrieve the held call**

Press **【保留】**.

■ **To transfer the held call to the base unit**

Press **【保留】** → **【#】** during a call. → Press **【0】**. → Press **【切】** when the other party answers.

■ **To transfer the held call to the main cordless handset or another personal cordless handset**

Press **【保留】** → **【#】** during a call. → Press **【1】 - 【6】** (Intercom No.). → Press **【切】** when the other party answers.

## **Sending faxes/Copying documents**

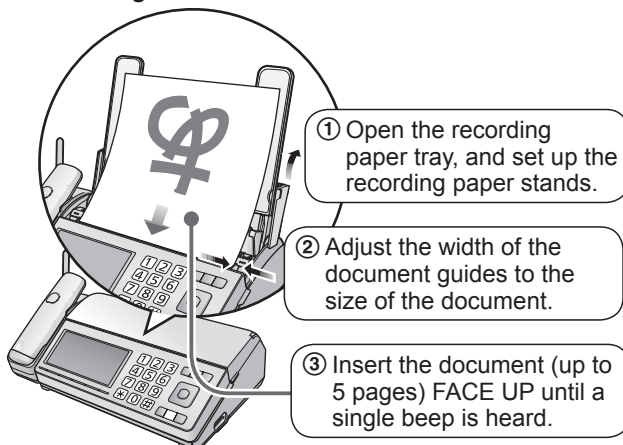
■ **Sending faxes**

Press **【ファクス】** (Fax: **9**). → Insert the document. → Dial the fax number. → Press **【ファクス】**.

■ **Copying documents**

Insert the recording paper. → Insert the document. → Press **【コピー】** (Copy: **9**).

■ **Installing document**



■ **Installing recording paper**

