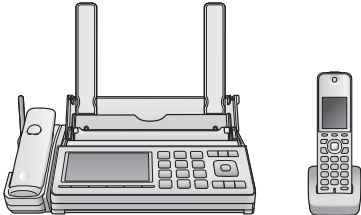
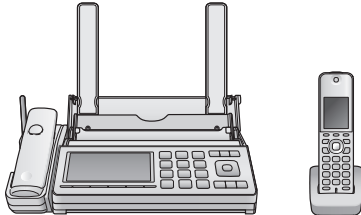


Quick Reference Guide

Facsimile

Model No. **KX-PD725DL** **KX-PZ720DL**
KX-PD725DW **KX-PZ720DW**

<p>KX-PD725DL/KX-PD725DW</p>  <p>Base unit (KX-PD725) Main cordless handset (KX-FKD353)</p> <p>Personal cordless handset (KX-FKD556)</p>	<p>KX-PZ720DL/KX-PZ720DW</p>  <p>Base unit (KX-PZ720) Main cordless handset (KX-FKD353)</p> <p>Personal cordless handset (KX-FKD556)</p>
-----------------------------------------------------------------------------------------------------------------------------------------------------------------------------------------------------------------------------------------------	------------------------------------------------------------------------------------------------------------------------------------------------------------------------------------------------------------------------------------------------

- KX-PD725DL/KX-PZ720DL includes 1 main cordless handset, 1 personal cordless handset and 1 base unit.
- KX-PD725DW/KX-PZ720DW includes 1 main cordless handset, 2 personal cordless handsets and 1 base unit.

Table of Contents

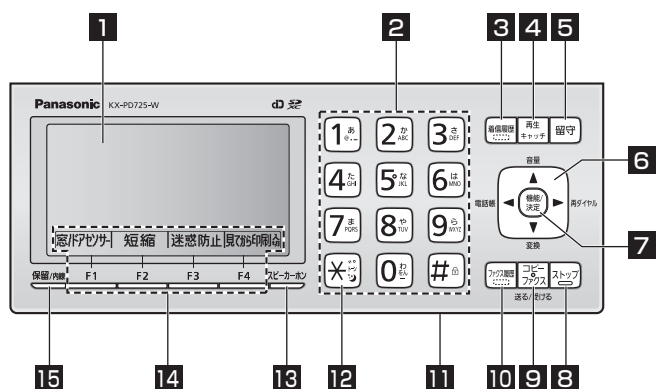
Parts Descriptions	2
Basic Operations	3

Thank you for purchasing a Panasonic product.

- This guide explains some basic features and operations, but not all of them. For further details, see the Japanese operating instructions.
- This product is designed for use in Japan.
Panasonic cannot provide service for this product if used outside Japan.
- Any details given in this guide are subject to change without notice.

Parts Descriptions

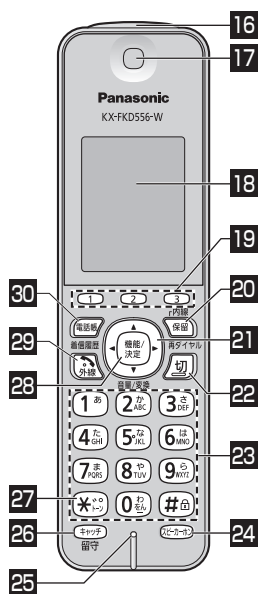
Base unit



- 1 Liquid crystal display
- 2 Numeral/Character buttons
- 3 Caller ID Log button & indicator
- 4 Playback/Flash button
- 5 Auto Answer button & indicator
- 6 Phonebook button (電話帳)
- Redial button (再ダイヤル)
- Volume control button (音量)
- 7 Function/Set button
- 8 Stop button
- 9 Copy/Fax button
- 10 Fax Log button & indicator
- 11 Microphone (Front side)
- 12 Tone button (to switch to tone dialing)
- 13 Speakerphone button
- 14 Multi-operation buttons
- 15 Hold/Intercom button

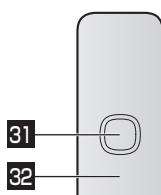
Main cordless handset/Personal cordless handset

• The illustration shown is the personal cordless handset. Please refer to the same numbers for the main cordless handset.

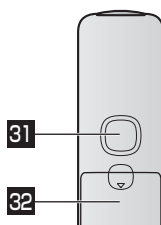


Backside View

Main cordless handset



Personal cordless handset



- 16 Incoming Call Indicator (Personal cordless handset only)
- 17 Earpiece
- 18 Liquid crystal display
- 19 Multi-operation/One-touch Dial buttons
- 20 Hold/Intercom button
- 21 Caller ID button (着信履歴)
- Redial button (再ダイヤル)
- Volume control button (音量/変換)
- 22 Off button
- 23 Numeral/Character buttons
- 24 Speakerphone button
- 25 Microphone
- 26 Flash button
- 留守 : Auto Answer button (Personal cordless handset only)
- 27 Tone button (to switch to tone dialing)
- 28 Function/Set button
- 29 Talk button
- 30 Phonebook button
- 31 Speaker
- 32 Battery cover

Basic Operations

- The number after the button shows the location of the button described in the previous page.
- Main cordless handset can be used in the distance like a personal cordless handset.
- Operate the base unit to use the main cordless handset.

Base unit

■ To make a call

Lift the main cordless handset. → Dial the phone number (2). → Talk. → To end the call, place the main cordless handset on the base unit or press 【切】 (Off: 22).

■ To receive a call

When the phone rings, lift the main cordless handset. → Talk. → To end the call, place the main cordless handset on the base unit or press 【切】.

- When:
 - document reception is required,
 - a fax calling tone (slow beep) is heard, or
 - no sound is heard,press 【ファクス】 (Fax: 9).

■ To place the current call on hold

Press 【保留】 (Hold: 20) during a call with the main cordless handset. (You can place the main cordless handset on the base unit.)

■ To retrieve the held call

- If you have returned the main cordless handset on the base unit, lift the main cordless handset.
- If you have not returned the main cordless handset on the base unit, press 【外線】 (Talk: 29).

■ To transfer the held call to the personal cordless handset

Press 【保留】 → 【#】 during a call. → Press 【1】 - 【5】 (Intercom No.). → Press 【切】 when the other party answers.

■ To use TAM (Telephone Answering Machine)

When you leave home, press 【留守】 (Auto Answer: 5) to turn on the indicator. (To deactivate, press 【留守】 again to turn off the indicator.)
→ When receiving a call while TAM is activated, it answers the call automatically in Japanese, and records the incoming messages. Then, the 【留守】 indicator starts flashing.
→ When you return home, press 【留守】 to play back the messages. The 【留守】 indicator turns off and the answering mode is deactivated. After playing back the messages, press 【はい】 (Yes: 14) twice to erase the messages or press 【いいえ】 (No: 14) to keep the messages.

To play back all messages while TAM is deactivated, press 【再生】 (Playback: 4) → 【▼】 【▲】 (6) to select “すべて再生” → 【決定】 (Set: 7).

After playing back the messages, press 【はい】 (Yes: 14) twice to erase the messages or press 【いいえ】 (No: 14) to keep the messages.

*Up to 50 messages can be recorded for approx. 12 minutes in total.

■ To hear recorded messages while away from home (Remote control)

Preparation before you leave home

Store a remote control number.

With the main cordless handset placed on the base unit, press 【機能】 (Function: 7) → 【#】 【0】 【0】 【6】. → Enter the desired 4-digit number. → Press 【決定】, then press 【ストップ】 (Stop: 8).

When you leave home, press 【留守】 to turn on the indicator.

To hear messages

Dial your home phone number. → While the outgoing message is played back, enter your remote control number. → Announcement. → Press 【4】. → You will hear recorded messages if any.

NOTE

- This operation can be made only from a touch-tone phone.

Personal cordless handset

■ To make a call

Lift the personal cordless handset from the charger and press 【外線】. → Dial the phone number (23). → Talk. → To end the call, place the personal cordless handset on the charger or press 【切】.

■ To receive a call

When the phone rings, lift the personal cordless handset from the charger and press 【外線】. → Talk. → To end the call, place the personal cordless handset on the charger or press 【切】.

- When:
 - document reception is required,
 - a fax calling tone (slow beep) is heard, or
 - no sound is heard,press 【機能】 (Function: 28) → 【▼】 【▲】 (21) to select “ファクス受信” → 【決定】 (Set: 28) → 【はい】 (Yes: 19).

■ **To make a call using the speakerphone (Hands-free talk)**

Press **【スピーカーホン】** (Speakerphone: **24**).

→ Dial the phone number. → Talk to the microphone (**25**). → To end the call, place the personal cordless handset on the charger or press **【切】**.

- Speak clearly about 50 cm away from the microphone.
- Speak alternately with the other party. The sound may cut in and out if you both speak at the same time.

■ **To receive a call with the speakerphone (Hands-free talk)**

When the phone rings, press **【スピーカーホン】**.

→ Talk to the microphone. → To end the call, place the personal cordless handset on the charger or press **【切】**.

■ **To place the current call on hold**

Press **【保留】** (Hold: **20**) during a call.

■ **To retrieve the held call**

Press **【外線】**.

■ **To transfer the held call to the base unit**

Press **【保留】** → **【#】** during a call. → Press **【0】**. → Press **【切】** when the other party answers.

■ **To transfer the held call to the main cordless handset or another personal cordless handset**

Press **【保留】** → **【#】** during a call. → Press **【1】 - 【6】** (Intercom No.). → Press **【切】** when the other party answers.

Sending faxes/Copying documents

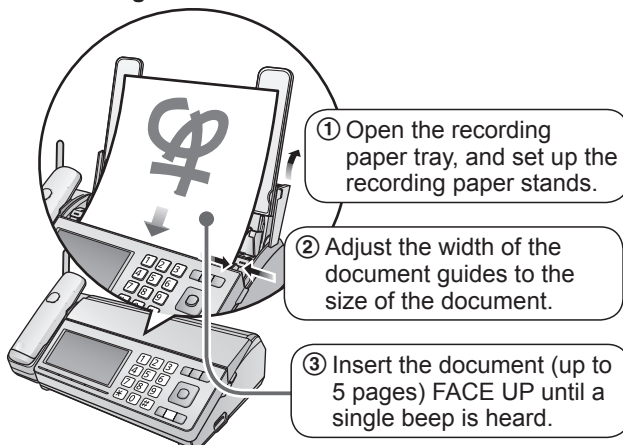
■ **Sending faxes**

Press **【ファクス】** (Fax: **9**). → Insert the document. → Dial the fax number. → Press **【ファクス】**.

■ **Copying documents**

Insert the recording paper. → Insert the document. → Press **【コピー】** (Copy: **9**).

■ **Installing document**



■ **Installing recording paper**

